

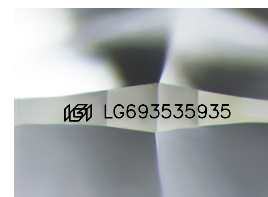
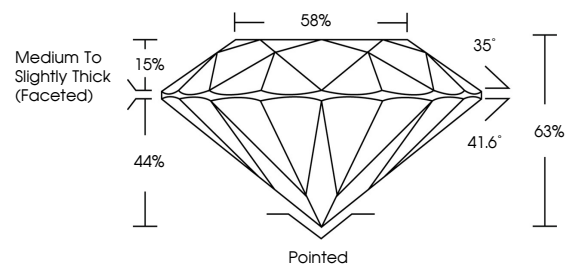


**ELECTRONIC COPY**

## LABORATORY GROWN DIAMOND REPORT

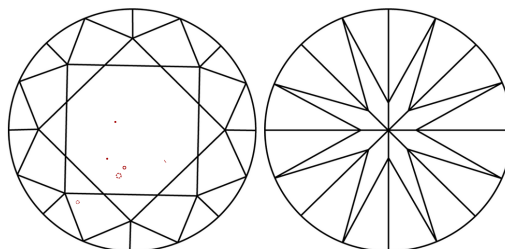
LG693535935  
Report verification at [iqi.org](https://iqi.org)

## PROPORTIONS



Sample Image Used

## CLARITY CHARACTERISTICS



### KEY TO SYMBOLS

Red symbols indicate internal characteristics.  
Green symbols indicate external characteristics.

## COLOR

D E F G H I J Faint Very Light Light

## CLARITY

IF WS<sup>1-2</sup> VS<sup>1-2</sup> SI<sup>1-2</sup> |<sup>1-3</sup>

|                        |                                |                           |                      |          |
|------------------------|--------------------------------|---------------------------|----------------------|----------|
| Internally<br>Flawless | Very Very<br>Slightly Included | Very<br>Slightly Included | Slightly<br>Included | Included |
|------------------------|--------------------------------|---------------------------|----------------------|----------|



March 24, 2025

IGI Report Number **LG693535935**Description **LABORATORY GROWN DIAMOND**Shape and Cutting Style **ROUND BRILLIANT**

Measurements 8.09 - 8.14 X 5.11 MM

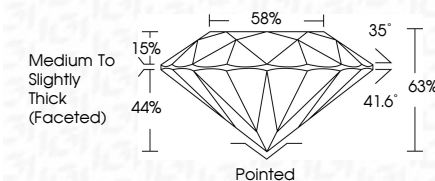
## GRADING RESULTS

Carat Weight **2.07 CARATS**

Color Grade E

Clarity Grade VS 1

Cut Grade **EXCELLENT**



### ADDITIONAL GRADING INFORMATION

Polish EXCELLENT

Symmetry **EXCELLENT**Fluorescence **NONE**Inscription(s)  LG693535935

Comments: This Laboratory Grown Diamond was created by Chemical Vapor Deposition (CVD) growth process.  
Type IIa



© IGI 2020, International Gemological Institute

FD - 10 20



THIS DOCUMENT WAS PRODUCED WITH THE FOLLOWING SECURITY MEASURES: SPECIAL DOCUMENT PAPER, INK SCREENS, WATERMARK, BACKGROUND DESIGNS, HOLOGRAM AND OTHER SECURITY FEATURES NOT LISTED AND DO EXCEED DOCUMENT SECURITY INDUSTRY GUIDELINES

**www.igi.org**

|                 |                          |              |             |               |           |           |                                    |          |              |                 |
|-----------------|--------------------------|--------------|-------------|---------------|-----------|-----------|------------------------------------|----------|--------------|-----------------|
| March 24, 2026  | GI Report No: LG69385935 | 207 CARATS   | E           | VS 1          | 63%       | 86%       | Medium to Slightly Thick (Faceted) | Pointed  | NONE         | 1691 LG69385935 |
| ROUND BRILLIANT | 0.09 - 0.14 X 6.11 MM    | Color Weight | Color Grade | Clarity Grade | Cut Grade | Depth     | Girdle                             | Symmetry | Fluorescence | Inscriptions(s) |
|                 |                          |              |             |               |           | Excellent | Grade                              |          |              |                 |

Comments:  
 Created by: Chemist Diamond was  
 treated by Chemical Vapor Deposition  
 (CVD) growth process.  
 type IIA