



ELECTRONIC COPY

LABORATORY GROWN DIAMOND REPORT

April 4, 2025
IGI Report Number LG693538350
Description LABORATORY GROWN DIAMOND
Shape and Cutting Style DECAGON MODIFIED BRILLIANT
Measurements 10.65 X 11.23 X 6.66 MM

GRADING RESULTS

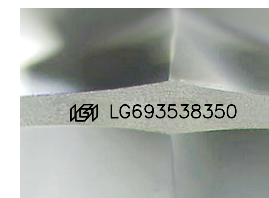
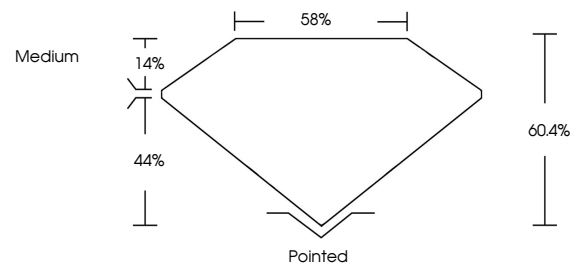
Carat Weight 4.91 CARATS
Color Grade F
Clarity Grade VS 1

ADDITIONAL GRADING INFORMATION

Polish EXCELLENT
Symmetry EXCELLENT
Fluorescence NONE
Inscription(s) LG693538350

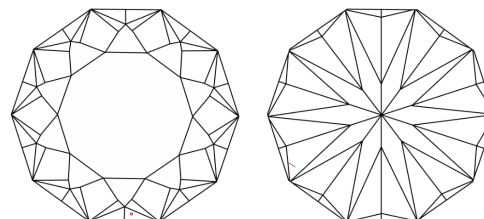
Comments: HEARTS & ARROWS
This Laboratory Grown Diamond was created by Chemical Vapor Deposition (CVD) growth process. Type IIa

PROPORTIONS



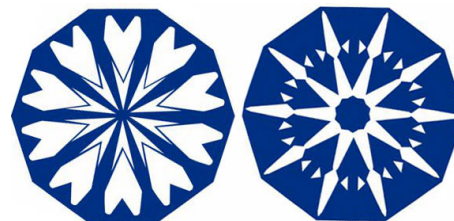
Sample Image Used

CLARITY CHARACTERISTICS



KEY TO SYMBOLS

Red symbols indicate internal characteristics.
Green symbols indicate external characteristics.



COLOR

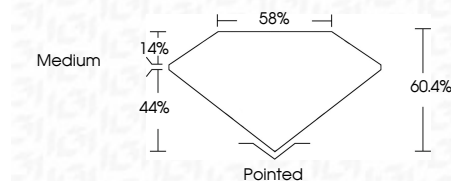
D E F G H I J Faint Very Light Light

CLARITY

IF VS¹⁻² VS¹⁻² SI¹⁻² I¹⁻³
Internally Flawless Very Very Slightly Included Very Slightly Included Slightly Included Included



April 4, 2025
IGI Report Number LG693538350
Description LABORATORY GROWN DIAMOND
Shape and Cutting Style DECAGON MODIFIED BRILLIANT
Measurements 10.65 X 11.23 X 6.66 MM
GRADING RESULTS
Carat Weight 4.91 CARATS
Color Grade F
Clarity Grade VS 1



ADDITIONAL GRADING INFORMATION

Polish EXCELLENT
Symmetry EXCELLENT
Fluorescence NONE
Inscription(s) LG693538350
Comments: HEARTS & ARROWS
This Laboratory Grown Diamond was created by Chemical Vapor Deposition (CVD) growth process. Type IIa



April 4, 2025
IGI Report No LG693538350
DECAGON MODIFIED BRILLIANT
10.65 X 11.23 X 6.66 MM
4.91 CARATS
F
VS 1
60.4%
44%
Medium
Pointed
EXCELLENT
EXCELLENT
NONE
None
 LG693538350
Comments: HEARTS & ARROWS
This Laboratory Grown Diamond was created by Chemical Vapor Deposition (CVD) growth process. Type IIa