



**INTERNATIONAL  
GEMOLOGICAL  
INSTITUTE**

**ELECTRONIC COPY**

LG693540988  
Report verification at [igi.org](https://igi.org)

LABORATORY GROWN DIAMOND REPORT



March 31, 2025

IGI Report Number **LG693540988**

Description	LABORATORY GROWN DIAMOND
-------------	--------------------------

Shape and Cutting Style **ROUND BRILLIANT**

Measurements 6.89 - 6.94 X 4.21 MM

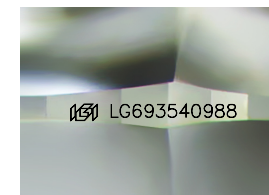
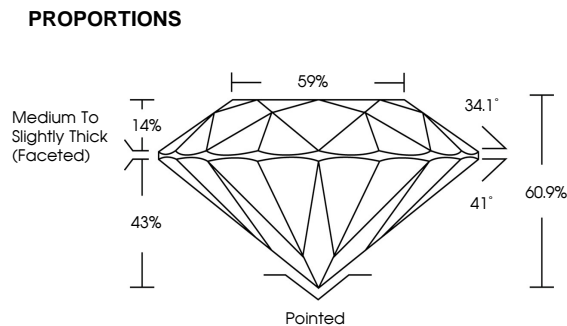
## GRADING RESULTS

Carat Weight 1.23 CARAT

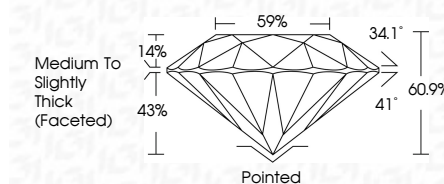
Color Grade

Clarity Grade VS 1

Cut Grade **IDEAL**



Sample Image Used



## COLOR

D E F G H I J Faint Very Light Light

## CLARITY

IF WS<sup>1-2</sup> VS<sup>1-2</sup> SI<sup>1-2</sup> | 1

Internally Flawless	Very Very Slightly Included	Very Slightly Included	Slightly Included	Included
------------------------	--------------------------------	---------------------------	----------------------	----------



© IGI 2020, International Gemological Institute

FD - 10 20

**www.igi.org**



THIS DOCUMENT WAS PRODUCED WITH THE FOLLOWING SECURITY MEASURES: SPECIAL DOCUMENT PAPER, INK SCREENS, WATERMARK, BACKGROUND DESIGNS, HOLOGRAM AND OTHER SECURITY FEATURES NOT LISTED AND DO EXCEED DOCUMENT SECURITY INDUSTRY GUIDELINES.



March 31, 2005	1.23 CARAT
IGI Report No. LG698	D
ROUND BRILLIANT	VS 1
	IDEAL
	60.9%
	59%
	Medium to Slightly Thick (Faceted)
	Polished
	EXCELLENT
	EXCELLENT
	NONE
	1691 LG6980498
Comments:	
The Laboratory Grown Diamond was analyzed by Chemical Vapor Deposition (CVD) growth process.	
Type IIGa	