



ELECTRONIC COPY

LG694504267
Report verification at igi.org



April 12, 2025
IGI Report Number **LG694504267**
Description **LABORATORY GROWN DIAMOND**
Shape and Cutting Style **SQUARE CUSHION MODIFIED BRILLIANT**
Measurements **5.83 X 5.71 X 3.71 MM**
GRADING RESULTS
Carat Weight **1.14 CARAT**
Color Grade **FANCY INTENSE BLUE**
Clarity Grade **VVS 2**

LABORATORY GROWN DIAMOND REPORT

April 12, 2025
IGI Report Number **LG694504267**
Description **LABORATORY GROWN DIAMOND**
Shape and Cutting Style **SQUARE CUSHION MODIFIED BRILLIANT**
Measurements **5.83 X 5.71 X 3.71 MM**

GRADING RESULTS

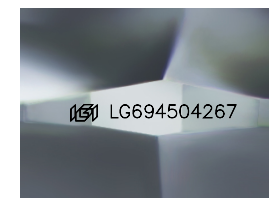
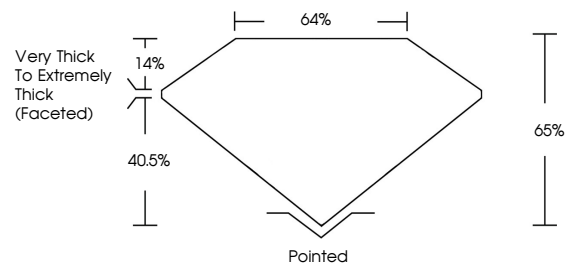
Carat Weight **1.14 CARAT**
Color Grade **FANCY INTENSE BLUE**
Clarity Grade **VVS 2**

ADDITIONAL GRADING INFORMATION

Polish **EXCELLENT**
Symmetry **VERY GOOD**
Fluorescence **NONE**
Inscription(s) **IGI LG694504267**

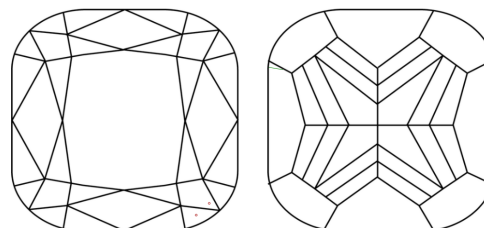
Comments: This Laboratory Grown Diamond was created by High Pressure High Temperature (HPHT) growth process.
Indications of post-growth treatment.

PROPORTIONS



Sample Image Used

CLARITY CHARACTERISTICS



KEY TO SYMBOLS

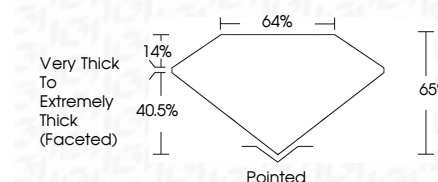
Red symbols indicate internal characteristics.
Green symbols indicate external characteristics.

COLOR

D E F G H I J Faint Very Light Light

CLARITY

IF	VS ¹⁻²	VS ¹⁻²	SI ¹⁻²	I ¹⁻³
Internally Flawless	Very Very Slightly Included	Very Slightly Included	Slightly Included	Included



ADDITIONAL GRADING INFORMATION

Polish **EXCELLENT**
Symmetry **VERY GOOD**
Fluorescence **NONE**
Inscription(s) **IGI LG694504267**
Comments: This Laboratory Grown Diamond was created by High Pressure High Temperature (HPHT) growth process.
Indications of post-growth treatment.



April 12, 2025
IGI Report No **LG694504267**
SQUARE CUSHION MODIFIED BRILLIANT
1.14 CARAT
Carat Weight
Color Grade **FANCY INTENSE BLUE**
Clarity Grade **VVS 2**
Depth **65%**
Table **14%**
Girdle **Very Thick to Extremely Thick (Faceted)**
Culet **Pointed**
Polish **EXCELLENT**
Symmetry **VERY GOOD**
Fluorescence **NONE**
Inscription(s) **IGI LG694504267**

Comments: This Laboratory Grown Diamond was created by High Pressure High Temperature (HPHT) growth process.
Indications of post-growth treatment.