

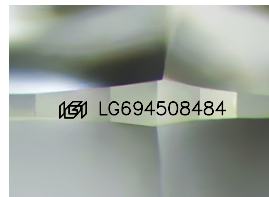
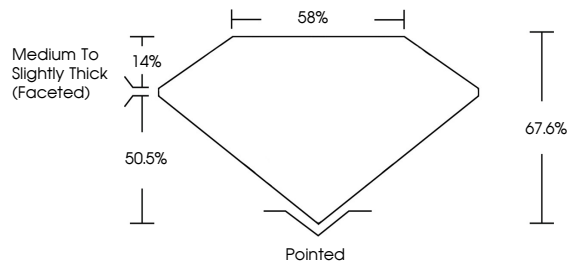


**INTERNATIONAL
GEMOLOGICAL
INSTITUTE**

ELECTRONIC COPY

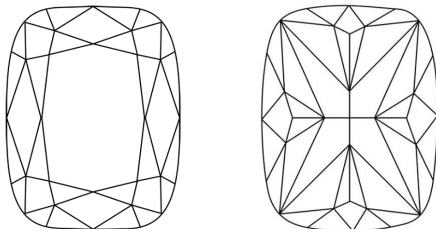
LG694508484
Report verification at igi.org

PROPORTIONS



Sample Image Used

CLARITY CHARACTERISTICS



KEY TO SYMBOLS

Red symbols indicate internal characteristics.
Green symbols indicate external characteristics.

COLOR

D E F G H I J Faint Very Light Light

CLARITY

IF WS¹⁻² VS¹⁻² SI¹⁻² |¹⁻

Internally Flawless	Very Very Slightly Included	Very Slightly Included	Slightly Included	Included
------------------------	--------------------------------	---------------------------	----------------------	----------



© IGI 2020, International Gemological Institute

FD - 10 20

www.igi.org

THIS DOCUMENT WAS PRODUCED WITH THE FOLLOWING SECURITY MEASURES: SPECIAL DOCUMENT PAPER, INK SCREENS, WATERMARK, BACKGROUND DESIGNS, HOLOGRAM AND OTHER SECURITY FEATURES NOT LISTED AND DO EXCEED DOCUMENT SECURITY INDUSTRY GUIDELINES

LABORATORY GROWN DIAMOND REPORT



April 9, 2025

IGI Report Number **LG694508484**

Description	LABORATORY GROWN DIAMOND
-------------	--------------------------

Shape and Cutting Style **CUSHION MODIFIED
BRILLIANT**

Measurements 10.45 X 8.40 X 5.68 MM

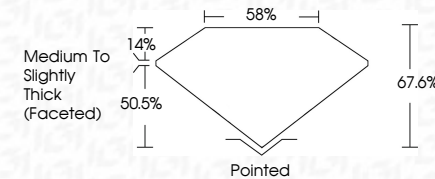
GRADING RESULTS

Carat Weight **3.81 CARATS**

Color Grade	D
-------------	---

Clarity Grade **INTERNALLY FLAWLESS**

Cut Grade **EXCELLENT**



ADDITIONAL GRADING INFORMATION

Polish **EXCELLENT**Symmetry **EXCELLENT**

Fluorescence NONI

Inscription(s) LG694508484

Comments: As Grown - No indication of post-growth treatment.

This Laboratory Grown Diamond was created by High Pressure High Temperature (HPHT) growth process.

Type II



IGI

April 9, 2025	CUSHION MODIFIED BRILLIANT		3.81 CARATS	
IGI Report No. LG49450464				
10.45 X 8.40 X 5.68 MM	Carat Weight	Color Grade	Clarity Grade	IF
			Excellent	EXCELLENT
			67.9%	56%
			Medium to Slightly Thick (faceted)	
				Pointed
				EXCELLENT
				EXCELLENT
				NONE
				ISS: LG49450464
Comments:				
As Grown - No indication of post-growth treatment.				
The Laboratory Growth Diamond was grown in a high-pressure, high-temperature (HPHT) growth process.				
Type IIb				