



**ELECTRONIC COPY**

## LABORATORY GROWN DIAMOND REPORT

March 26, 2025	
IGI Report Number	LG694524916
Description	LABORATORY GROWN DIAMOND
Shape and Cutting Style	ROUND BRILLIANT
Measurements	8.06 - 8.10 X 5.02 MM

## GRADING RESULTS

Carat Weight	2.03 CARATS
Color Grade	E
Clarity Grade	VS 2
Cut Grade	IDEAL

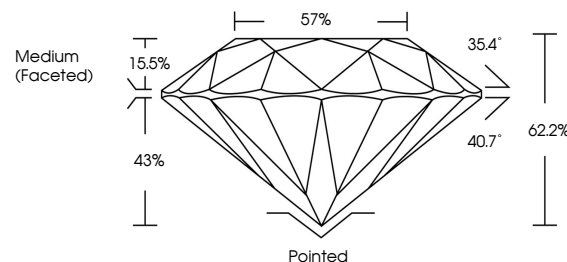
### ADDITIONAL GRADING INFORMATION

Polish	EXCELLENT
Symmetry	EXCELLENT
Fluorescence	NONE
Inscription(s)	151 LG694524916

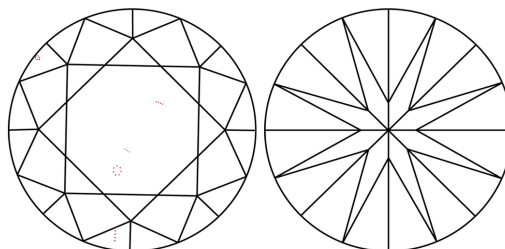
Comments: This Laboratory Grown Diamond was created by Chemical Vapor Deposition (CVD) growth process.  
Type IIa

LG694524916  
Report verification at [lgi.org](https://lgi.org)

## PROPORTIONS

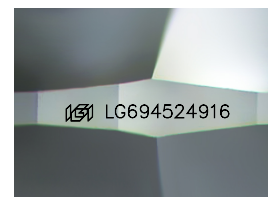


## CLARITY CHARACTERISTICS



## KEY TO SYMBOLS

Red symbols indicate internal characteristics.  
Green symbols indicate external characteristics.



Sample Image Used

## COLOR

D E F G H I J Faint Very Light Light

## CLARITY

IF                      VWS<sup>1-2</sup>                      VS<sup>1-2</sup>                      SI<sup>1-2</sup>                      I<sup>1-3</sup>

Internally Flawless	Very Very Slightly Included	Very Slightly Included	Slightly Included	Included
------------------------	--------------------------------	---------------------------	----------------------	----------

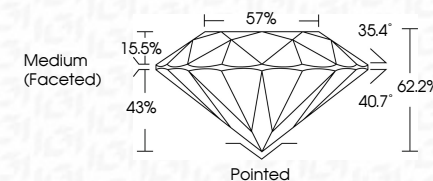
## LABORATORY GROWN DIAMOND REPORT



March 26, 2025	
IGI Report Number	LG694524916
Description	LABORATORY GROWN DIAMOND
Shape and Cutting Style	ROUND BRILLIANT
Measurements	8.06 - 8.10 X 5.02 MM

## GRADING RESULTS

Carat Weight	2.03 CARATS
Color Grade	E
Clarity Grade	VS 2
Cut Grade	IDEAL



### ADDITIONAL GRADING INFORMATION

Polish	EXCELLENT
Symmetry	EXCELLENT
Fluorescence	NONE
Inscription(s)	
<p>Comments: This Laboratory Grown Diamond was created by Chemical Vapor Deposition (CVD) growth process.</p> <p>Type IIa</p>	



© IGI 2020, International Gemological Institute

FD - 10 20



THIS DOCUMENT WAS PRODUCED WITH THE FOLLOWING SECURITY MEASURES: SPECIAL DOCUMENT PAPER, INK SCREENS, WATERMARK, BACKGROUND DESIGNS, HOLOGRAM AND OTHER SECURITY FEATURES NOT LISTED AND DO EXCEED DOCUMENT SECURITY INDUSTRY GUIDELINES

**www.igi.org**

<b>March 26, 2005</b>	<b>G Report No.</b> LG5946ZAP16	<b>2.08 CARATS</b>	<b>E</b>
<b>ROUND BRILLIANT</b>	<b>10.06 - 8.10 X 5.02 MM</b>	<b>VS 2</b>	<b>VS 2</b>
<b>Color Weight</b>	<b>Clarity Grade</b>	<b>IDEAL</b>	<b>62.2%</b>
<b>Color Grade</b>	<b>Curvature</b>	<b>Depth</b>	<b>57%</b>
<b>Curvature</b>	<b>Table</b>	<b>Girdle</b>	<b>Medium (Faceted)</b>
<b>Symmetry</b>	<b>Fluorescence</b>	<b>Culet</b>	<b>Poished</b>
<b>Inscriptions(s)</b>		<b>None</b>	<b>EXCELLENT</b>
		<b>NONE</b>	<b>1651 LG5946ZAP16</b>

**Comments:**  
 This Natural Color Diamond was  
 created by Chemical Vapor Deposition  
 CVD growth process.  
 Type IIa