

**ELECTRONIC COPY**

## LABORATORY GROWN DIAMOND REPORT

|                         |                          |
|-------------------------|--------------------------|
| March 29, 2025          |                          |
| IGI Report Number       | LG694527396              |
| Description             | LABORATORY GROWN DIAMOND |
| Shape and Cutting Style | ROUND BRILLIANT          |
| Measurements            | 6.53 - 6.56 X 4.02 MM    |

## GRADING RESULTS

|               |            |
|---------------|------------|
| Carat Weight  | 1.07 CARAT |
| Color Grade   | E          |
| Clarity Grade | VS 1       |
| Cut Grade     | IDEAL      |

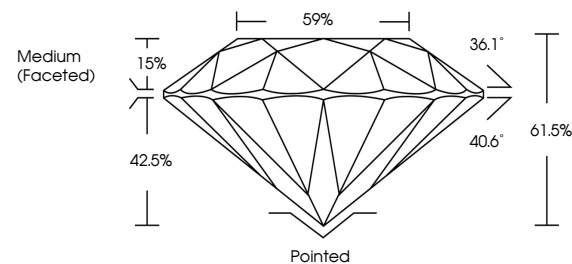
### ADDITIONAL GRADING INFORMATION

|                |   |
|----------------|---|
| Polish         | EXCELLENT   |
| Symmetry       | EXCELLENT   |
| Fluorescence   | NONE  |
| Inscription(s) |  LG694527396 |

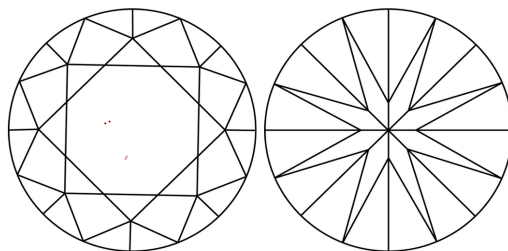
Comments: As Grown - No indication of post-growth treatment.  
This Laboratory Grown Diamond was created by High Pressure High Temperature (HPHT) growth process.  
Type II

LG694527396  
Report verification at [igi.org](https://igi.org)

## PROPORTIONS

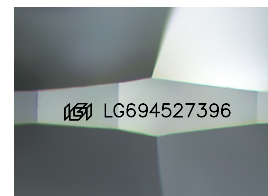


## CLARITY CHARACTERISTICS



## KEY TO SYMBOLS

Red symbols indicate internal characteristics.  
Green symbols indicate external characteristics.



Sample Image Used

**COLOR**

D E F G H I J Faint Very Light Light

## CLARITY

IF                      VS<sup>1-2</sup>                      VS<sup>1-2</sup>                      SI<sup>1-2</sup>                      |<sup>1-3</sup>

| Internally<br>Flawless | Very Very<br>Slightly Included | Very<br>Slightly Included | Slightly<br>Included | Included |
|------------------------|--------------------------------|---------------------------|----------------------|----------|
|------------------------|--------------------------------|---------------------------|----------------------|----------|

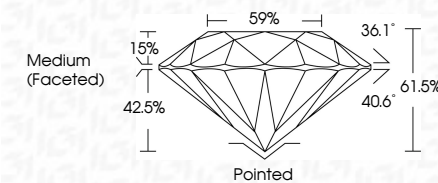
## LABORATORY GROWN DIAMOND REPORT



|                         |                          |
|-------------------------|--------------------------|
| March 29, 2025          |                          |
| IGI Report Number       | LG694527396              |
| Description             | LABORATORY GROWN DIAMOND |
| Shape and Cutting Style | ROUND BRILLIANT          |
| Measurements            | 6.53 - 6.56 X 4.02 MM    |

## GRADING RESULTS

|               |            |
|---------------|------------|
| Carat Weight  | 1.07 CARAT |
| Color Grade   | E          |
| Clarity Grade | VS 1       |
| Cut Grade     | IDEAL      |



### ADDITIONAL GRADING INFORMATION

|  |                            |
|--|----------------------------|
| Polish   | EXCELLENT                  |
| Symmetry   | EXCELLENT                  |
| Fluorescence   | NONE                       |
| Inscription(s)   | <del>(G)</del> LG694527396 |
| <p>Comments: As Grown - No indication of post-growth treatment.</p> <p>This Laboratory Grown Diamond was created by High Pressure High Temperature (HPHT) growth process.</p> <p>Type II</p> |                            |



© IGI 2020, International Gemological Institute

FD - 10 20

March 29, 2025  
IGI Report No LG694527396  
ROUND BRILLIANT

|                       |               |                         |
|-----------------------|---------------|-------------------------|
| 6.53 - 6.56 X 4.02 MM | Carat Weight  | 1.07 CARAT              |
|                       | Color Grade   | E                       |
|                       | Clarity Grade | VS 1                    |
|                       | Cut Grade     | IDEAL                   |
|                       | Depth         | 61.0%                   |
|                       | Table         | 59%                     |
|                       | Girdle        | Medium (Faceted)        |
|                       | Culet         | Pointed                 |
|                       | Polish        | EXCELLENT               |
|                       | Symmetry      | EXCELLENT               |
|                       | Fluorescence  | NONE                    |
|                       | Inscriptions  | See 1 Color Certificate |

**Comments:**  
As Grown - No Indication of post-growth treatment.  
This Laboratory Grown Diamond was created by High Pressure High Temperature (HPHT) growth process.