



ELECTRONIC COPY

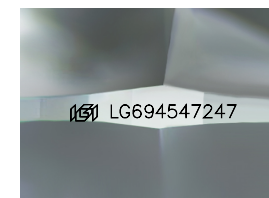
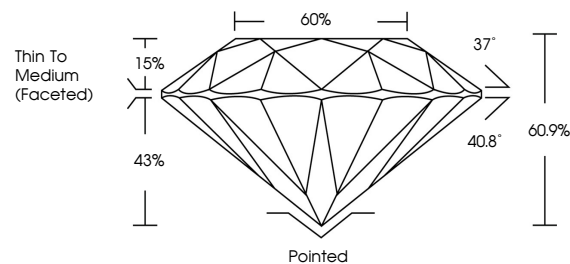
LG694547247
Report verification at igi.org



April 18, 2025
IGI Report Number **LG694547247**
Description **LABORATORY GROWN DIAMOND**
Shape and Cutting Style **ROUND BRILLIANT**
Measurements **7.34 - 7.36 X 4.48 MM**
GRADING RESULTS
Carat Weight **1.49 CARAT**
Color Grade **FANCY PINK**
Clarity Grade **VS 2**
Cut Grade **VERY GOOD**

April 18, 2025
IGI Report Number **LG694547247**
Description **LABORATORY GROWN DIAMOND**
Shape and Cutting Style **ROUND BRILLIANT**
Measurements **7.34 - 7.36 X 4.48 MM**

PROPORTIONS

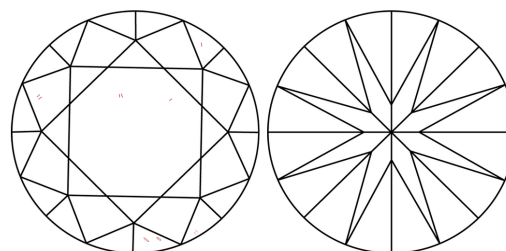


Sample Image Used

GRADING RESULTS

Carat Weight **1.49 CARAT**
Color Grade **FANCY PINK**
Clarity Grade **VS 2**
Cut Grade **VERY GOOD**

CLARITY CHARACTERISTICS



KEY TO SYMBOLS

Red symbols indicate internal characteristics.
Green symbols indicate external characteristics.

ADDITIONAL GRADING INFORMATION

Polish **VERY GOOD**
Symmetry **GOOD**
Fluorescence **SLIGHT**
Inscription(s) **IGI LG694547247**

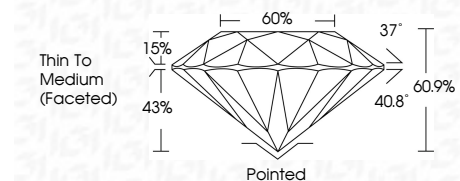
Comments: This Laboratory Grown Diamond was created by High Pressure High Temperature (HPHT) growth process.
Indications of post-growth treatment.

COLOR

D E F G H I J Faint Very Light Light

CLARITY

IF	VS ¹⁻²	VS ¹⁻²	SI ¹⁻²	I ¹⁻³
Internally Flawless	Very Very Slightly Included	Very Slightly Included	Slightly Included	Included



ADDITIONAL GRADING INFORMATION

Polish **VERY GOOD**
Symmetry **GOOD**
Fluorescence **SLIGHT**
Inscription(s) **IGI LG694547247**
Comments: This Laboratory Grown Diamond was created by High Pressure High Temperature (HPHT) growth process.
Indications of post-growth treatment.



April 18, 2025
IGI Report No LG694547247
ROUND BRILLIANT
1.49 CARAT
FANCY PINK
VS 2
VERY GOOD
60.9%
66%
Thin To Medium (Faceted)
Pointed
VERY GOOD
GOOD
SLIGHT
IGI LG694547247
Comments: This Laboratory Grown Diamond was created by High Pressure High Temperature (HPHT) growth process.
Indications of post-growth treatment.