



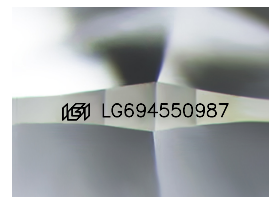
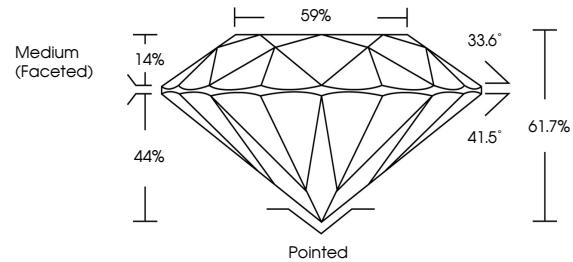
**INTERNATIONAL
GEMOLOGICAL
INSTITUTE**

ELECTRONIC COPY

LABORATORY GROWN DIAMOND REPORT

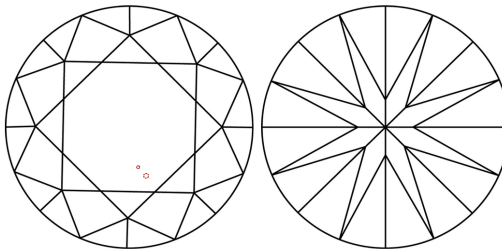
LG694550987
Report verification at igi.org

PROPORTIONS



Sample Image Used

CLARITY CHARACTERISTICS



KEY TO SYMBOLS

Red symbols indicate internal characteristics.
Green symbols indicate external characteristics.

COLOR

D E F G H I J Faint Very Light Light

CLARITY

IF WS¹⁻² VS¹⁻² SI¹⁻² I¹⁻³

Internally Flawless	Very Very Slightly Included	Very Slightly Included	Slightly Included	Included
------------------------	--------------------------------	---------------------------	----------------------	----------



© IGI 2020, International Gemological Institute

FD - 10 20

LABORATORY GROWN DIAMOND REPORT



March 26, 2025

IGI Report Number **LG694550987**

Description	LABORATORY GROWN DIAMOND
-------------	--------------------------

Shape and Cutting Style **ROUND BRILLIANT**

Measurements	8.21 - 8.26 X 5.08 MM
--------------	-----------------------

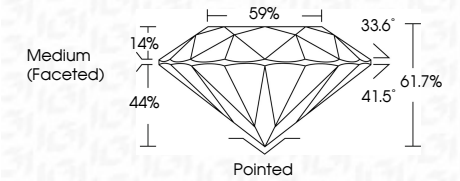
GRADING RESULTS

Carat Weight **2.10 CARATS**

Color Grade	E
-------------	---

Clarity Grade VS 1

Cut Grade **IDEAL**



ADDITIONAL GRADING INFORMATION

Polish **EXCELLENT**Symmetry **EXCELLENT**Fluorescence **NONE**Inscription(s) LG694550987

Comments: This Laboratory Grown Diamond was created by Chemical Vapor Deposition (CVD) growth process.
Type IIa



IGI

March 26, 2025	
IGI Report No. LG59450987	
ROUND BRILLIANT	
2.121 - 0.26 X 5.08 MM	
Carat Weight	2.10 CARATS
Color Grade	E
Clarity Grade	VS 1
Cut Grade	IDEAL
Depth	61.7%
Table	59%
Girdle	Medium (Faceted)
Culet	Pointed
Pavil	EXCELLENT
Symmetry	EXCELLENT
Fluorescence (inclusions)	NONE
	lg51 LG59450987
Comments:	
This Laboratory Grown Diamond was created by Chemical Vapor Deposition (CVD) growth process.	
Type IId	