



**ELECTRONIC COPY**

## LABORATORY GROWN DIAMOND REPORT

|                         |                          |
|-------------------------|--------------------------|
| April 15, 2025          |                          |
| IGI Report Number       | LG694558287              |
| Description             | LABORATORY GROWN DIAMOND |
| Shape and Cutting Style | ROUND BRILLIANT          |
| Measurements            | 9.19 - 9.27 X 5.77 MM    |

## GRADING RESULTS

|               |                  |
|---------------|------------------|
| Carat Weight  | 3.01 CARATS      |
| Color Grade   | FANCY VIVID PINK |
| Clarity Grade | VVS 2            |
| Cut Grade     | IDEAL            |

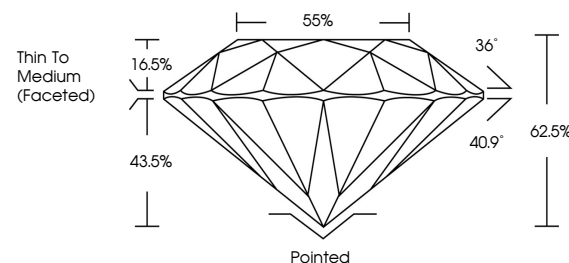
### ADDITIONAL GRADING INFORMATION

|                |                |
|----------------|----------------|
| Polish         | EXCELLENT      |
| Symmetry       | EXCELLENT      |
| Fluorescence   | SLIGHT         |
| Inscription(s) | 15 LG694558287 |

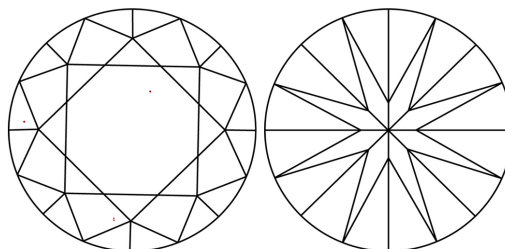
Comments: This Laboratory Grown Diamond was created by Chemical Vapor Deposition (CVD) growth process.  
Indications of post-growth treatment.

LG694558287  
Report verification at [iqi.org](https://iqi.org)

## PROPORTIONS

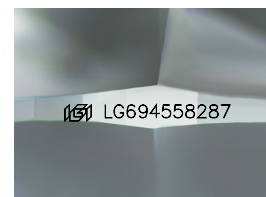


## CLARITY CHARACTERISTICS



### KEY TO SYMBOLS

Red symbols indicate internal characteristics.  
Green symbols indicate external characteristics.



Sample Image Used

## COLOR

D E F G H I J Faint Very Light Light

## CLARITY

IF WS<sup>1-2</sup> VS<sup>1-2</sup> SI<sup>1-2</sup> |<sup>1-3</sup>

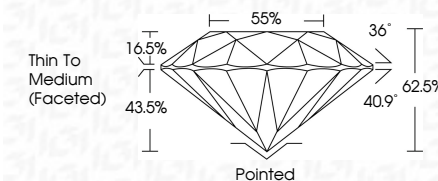
| Internally<br>Flawless | Very Very<br>Slightly Included | Very<br>Slightly Included | Slightly<br>Included | Included |
|------------------------|--------------------------------|---------------------------|----------------------|----------|
|------------------------|--------------------------------|---------------------------|----------------------|----------|



|                         |                          |
|-------------------------|--------------------------|
| April 15, 2025          |                          |
| IGI Report Number       | LG694558287              |
| Description             | LABORATORY GROWN DIAMOND |
| Shape and Cutting Style | ROUND BRILLIANT          |
| Measurements            | 9.19 - 9.27 X 5.77 MM    |

## GRADING RESULTS

|               |                  |
|---------------|------------------|
| Carat Weight  | 3.01 CARATS      |
| Color Grade   | FANCY VIVID PINK |
| Clarity Grade | VVS 2            |
| Cut Grade     | IDEAL            |



### ADDITIONAL GRADING INFORMATION

|  |                  |
|--|------------------|
| Polish   | EXCELLENT        |
| Symmetry   | EXCELLENT        |
| Fluorescence   | SLIGHT           |
| Inscription(s)   | (15) LG694558287 |
| <p>Comments: This Laboratory Grown Diamond was created by Chemical Vapor Deposition (CVD) growth process.</p> <p>Indications of post-growth treatment.</p> |                  |



© IGI 2020, International Gemological Institute

FD - 10 20



THIS DOCUMENT WAS PRODUCED WITH THE FOLLOWING SECURITY MEASURES: SPECIAL DOCUMENT PAPER, INK SCREENS, WATERMARK, BACKGROUND DESIGNS, HOLOGRAM AND OTHER SECURITY FEATURES NOT LISTED AND DO EXCEED DOCUMENT SECURITY INDUSTRY GUIDELINE

**www.igi.org**

April 15, 2025  
 IGI Report No LG694558287  
 ROUND BRILLIANT

|               |                          |
|---------------|--------------------------|
| Carat Weight  | 3.01 CARATS              |
| Color Grade   | FANCY VIVID PINK         |
| Clarity Grade | VVS 2                    |
| Depth         | IDEAL                    |
| Table         | 62.6%                    |
| Girdle        | 56%                      |
| Culet         | Thin To Medium (faceted) |
| Polish        | Pointed                  |
| Symmetry      | EXCELLENT                |
| Fluorescence  | EXCELLENT                |
|               | SLIGHT                   |

**Comments:**  
This Laboratory Grown Diamond was  
created by Chemical Vapor Deposition  
(CVD) growth process.