



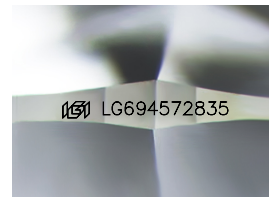
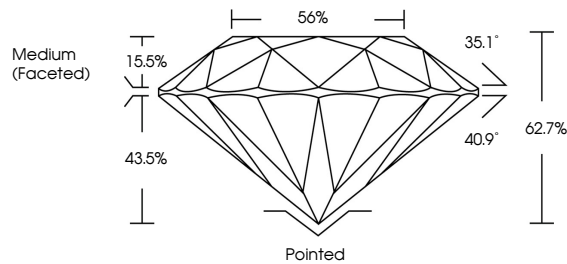
**INTERNATIONAL  
GEMOLOGICAL  
INSTITUTE**

**ELECTRONIC COPY**

## LABORATORY GROWN DIAMOND REPORT

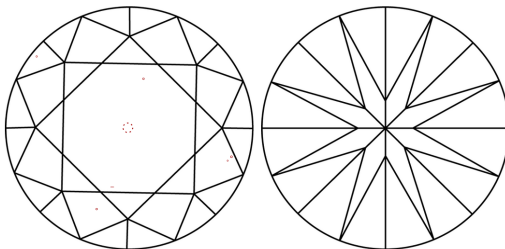
LG694572835  
Report verification at [igi.org](https://www.igi.org)

## PROPORTIONS



Sample Image Used

## CLARITY CHARACTERISTICS



## KEY TO SYMBOLS

Red symbols indicate internal characteristics.  
Green symbols indicate external characteristics.

**COLOR**

D E F G H I J      Faint      Very Light      Light

## CLARITY

IF                      WS<sup>1-2</sup>                      VS<sup>1-2</sup>                      SI<sup>1-2</sup>                      |<sup>1-3</sup>

Internally Flawless	Very Very Slightly Included	Very Slightly Included	Slightly Included	Included
------------------------	--------------------------------	---------------------------	----------------------	----------



© IGI 2020, International Gemological Institute

FD - 10 20

**www.igi.org**

THIS DOCUMENT WAS PRODUCED WITH THE FOLLOWING SECURITY MEASURES: SPECIAL DOCUMENT PAPER, INK SCREENS, WATERMARK, BACKGROUND DESIGNS, HOLOGRAM AND OTHER SECURITY FEATURES NOT LISTED AND DO EXCEED DOCUMENT SECURITY INDUSTRY GUIDELINES

## LABORATORY GROWN DIAMOND REPORT



March 28, 2025

IGI Report Number **LG694572835**

Description	LABORATORY GROWN DIAMOND
-------------	--------------------------

Shape and Cutting Style **ROUND BRILLIANT**

Measurements 9.33 - 9.39 X 5.86 MM

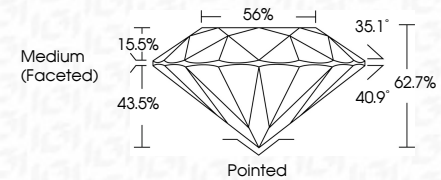
## GRADING RESULTS

Carat Weight **3.18 CARATS**

Color Grade **E**

Clarity Grade VS 1

Cut Grade **EXCELLENT**



### ADDITIONAL GRADING INFORMATION

Polish **EXCELLENT**

Symmetry **EXCELLENT**

Fluorescence **NONE**Inscription(s)  LG694572835

Comments: This Laboratory Grown Diamond was created by Chemical Vapor Deposition (CVD) growth process.  
Type IIa



IGI

<b>MARCH 26, 2025</b>	
<b>GIG Report No LG94672835</b>	
<b>ROUND BRILLIANT</b>	
<b>3.18 - 9.35 X 5.56 MM</b>	<b>3.18 CARATS</b>
<b>Carat Weight</b>	<b>E</b>
<b>Color Grade</b>	<b>VS I</b>
<b>Cutty Grade</b>	<b>EXCELLENT</b>
<b>Depth</b>	<b>62.7%</b>
<b>Table</b>	<b>56%</b>
<b>Girdle</b>	<b>Medium (Faced)</b>
<b>Culet</b>	<b>Poished</b>
<b>Polish</b>	<b>EXCELLENT</b>
<b>Symmetry</b>	<b>EXCELLENT</b>
<b>Fluorescence</b>	<b>NONE</b>
<b>Inscription(s)</b>	<b>(G) LG94672835</b>

**Comments:**  
The Laboratory Grown Diamond was created by Chemical Vapor Deposition (CVD) growth process.

Type IIa