



**ELECTRONIC COPY**

## LABORATORY GROWN DIAMOND REPORT

|                         |                          |
|-------------------------|--------------------------|
| April 18, 2025          |                          |
| IGI Report Number       | LG694583299              |
| Description             | LABORATORY GROWN DIAMOND |
| Shape and Cutting Style | ROUND BRILLIANT          |
| Measurements            | 6.58 - 6.59 X 4.01 MM    |

## GRADING RESULTS

|               |                   |
|---------------|-------------------|
| Carat Weight  | 1.07 CARAT        |
| Color Grade   | FANCY VIVID GREEN |
| Clarity Grade | VS 1              |
| Cut Grade     | IDEAL             |

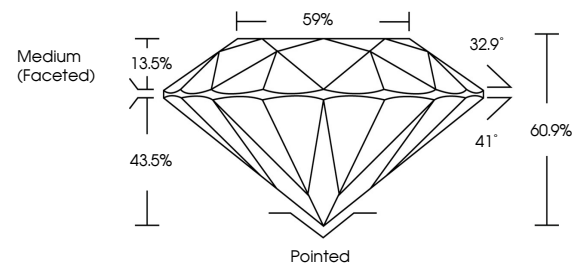
### ADDITIONAL GRADING INFORMATION

|                |   |
|----------------|---|
| Polish         | EXCELLENT   |
| Symmetry       | EXCELLENT   |
| Fluorescence   | VERY SLIGHT   |
| Inscription(s) |  LG694583299 |

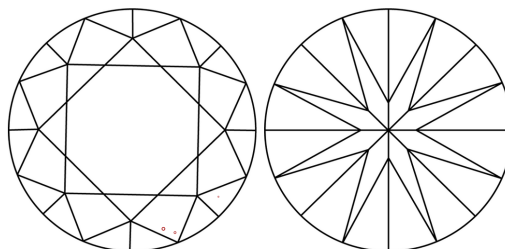
Comments: This Laboratory Grown Diamond was created by Chemical Vapor Deposition (CVD) growth process.  
Indications of post-growth treatment.

LG694583299  
Report verification at [igi.org](https://igi.org)

## PROPORTIONS

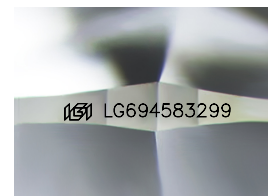


## CLARITY CHARACTERISTICS



## KEY TO SYMBOLS

Red symbols indicate internal characteristics.  
Green symbols indicate external characteristics.



Sample Image Used

## COLOR

D E F G H I J Faint Very Light Light

## CLARITY

IF      WS<sup>1-2</sup>      VS<sup>1-2</sup>      SI<sup>1-2</sup>      |<sup>1-3</sup>

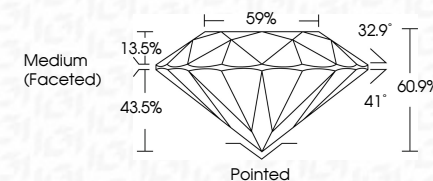
| Internally<br>Flawless | Very Very<br>Slightly Included | Very<br>Slightly Included | Slightly<br>Included | Included |
|------------------------|--------------------------------|---------------------------|----------------------|----------|
|------------------------|--------------------------------|---------------------------|----------------------|----------|



|                         |                          |
|-------------------------|--------------------------|
| April 18, 2025          |                          |
| IGI Report Number       | LG694583299              |
| Description             | LABORATORY GROWN DIAMOND |
| Shape and Cutting Style | ROUND BRILLIANT          |
| Measurements            | 6.58 - 6.59 X 4.01 MM    |

## GRADING RESULTS

|               |                   |
|---------------|-------------------|
| Carat Weight  | 1.07 CARAT        |
| Color Grade   | FANCY VIVID GREEN |
| Clarity Grade | VS 1              |
| Cut Grade     | IDEAL             |



### ADDITIONAL GRADING INFORMATION

|                |             |
|----------------|-------------|
| Polish         | EXCELLENT   |
| Symmetry       | EXCELLENT   |
| Fluorescence   | VERY SLIGHT |
| Inscription(s) | LG694583299 |

Comments: This Laboratory Grown Diamond was created by Chemical Vapor Deposition (CVD) growth process.  
Indications of post-growth treatment.



© IGI 2020, International Gemological Institute

FD - 10 20

**www.igi.org**

THIS DOCUMENT WAS PRODUCED WITH THE FOLLOWING SECURITY MEASURES: SPECIAL DOCUMENT PAPER, INK SCREENS, WATERMARK, BACKGROUND DESIGNS, HOLOGRAM AND OTHER SECURITY FEATURES NOT LISTED AND DO EXCEED DOCUMENT SECURITY INDUSTRY GUIDELINES

April 18, 2025  
GI Report No LG694583299  
POUND RILLANT

|               |                   |
|---------------|-------------------|
| Carat Weight  | 1.07 CARAT        |
| Color Grade   | FANCY VIVID GREEN |
| Clarity Grade | VS 1              |
| Cut Grade     | IDEAL             |
| Depth         | 60.9%             |
| Table         | 59%               |
| Fluorescence  | Medium (Faintest) |
| Culet         | Pointed           |
| Polish        | EXCELLENT         |
| Symmetry      | EXCELLENT         |
| Fluorescence  | VERY SLIGHT       |

**Comments:**  
This Laboratory Grown Diamond was created by Chemical Vapor Deposition (CVD) growth process.