

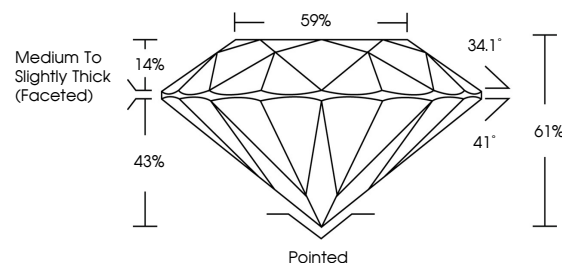


ELECTRONIC COPY

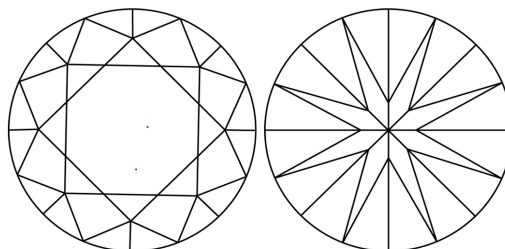
LABORATORY GROWN DIAMOND REPORT

LG694588194
Report verification at igi.org

PROPORTIONS



CLARITY CHARACTERISTICS



KEY TO SYMBOLS

Red symbols indicate internal characteristics.
Green symbols indicate external characteristics.

COLOR

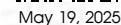
D E F G H I J Faint Very Light Light

CLARITY

IF WS¹⁻² VS¹⁻² SI¹⁻² |¹⁻³

Internally Flawless	Very Very Slightly Included	Very Slightly Included	Slightly Included	Included
------------------------	--------------------------------	---------------------------	----------------------	----------

LABORATORY GROWN DIAMOND REPORT

IGI Report Number **LG694588194**Description **LABORATORY GROWN DIAMOND**Shape and Cutting Style **ROUND BRILLIANT**

Measurements 7.50 - 7.53 X 4.58 MM

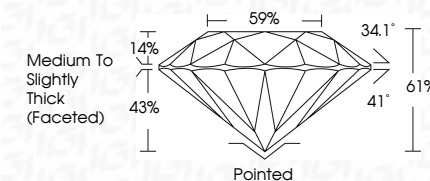
GRADING RESULTS

Carat Weight 1.59 CARAT

Color Grade E

Clarity Grade **VVS 2**

Cut Grade **IDEAL**



ADDITIONAL GRADING INFORMATION

Polish **EXCELLENT**Symmetry **EXCELLENT**Fluorescence **NONE**Inscription(s) LG694588194

Comments: This Laboratory Grown Diamond was created by Chemical Vapor Deposition (CVD) growth process.
Type IIa



© IGI 2020, International Gemological Institute

FD - 10 20

www.igi.org

THIS DOCUMENT WAS PRODUCED WITH THE FOLLOWING SECURITY MEASURES: SPECIAL DOCUMENT PAPER, INK SCREENS, WATERMARK BACKGROUND DESIGNS, HOLOGRAM AND OTHER SECURITY FEATURES NOT LISTED AND DO EXCEED DOCUMENT SECURITY INDUSTRY GUIDELINES

May 19, 2026	GI Report No LG4968194	ROUND BRILLIANT	1.55 CARAT E
650 - 7.33 X 4.68 MM	Color Weight	VVS 2	WGS 2
Color Grade	Clarity Grade	IDeal	01%
Cut Grade	Depth	Table	59%
Girdle	Medium to Slightly Thick (Faceted)	Painted	EXCELLENT
Culet	Polish	Symmetry	EXCELLENT
Fluorescence	Inscriptions(s)	NONE	169 LG4968194
Comments: The Laboratory Crown Diamond was found to have excellent polish and good growth process.			
Type Iia			