



**INTERNATIONAL
GEMOLOGICAL
INSTITUTE**

ELECTRONIC COPY

LG694597218
Report verification at [igi.org](https://www.igi.org)

LABORATORY GROWN DIAMOND REPORT



April 2, 2025

IGI Report Number **LG694597218**

Description	LABORATORY GROWN DIAMOND
-------------	--------------------------

Shape and Cutting Style **ROUND BRILLIANT**

Measurements	13.42 - 13.47 X 8.08 MM
--------------	-------------------------

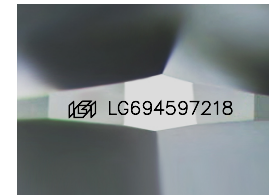
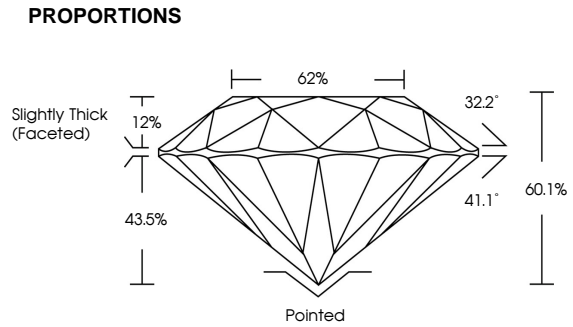
GRADING RESULTS

Carat Weight **9.04 CARATS**

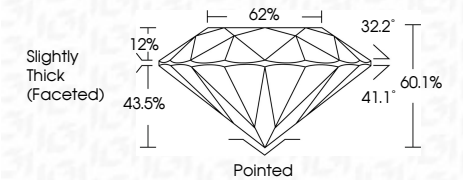
Color Grade	G
-------------	---

Clarity Grade VS 1

Cut Grade **EXCELLENT**



Sample Image Used



COLOR

D E F G H I J Faint Very Light Light

CLARITY

IF WS¹⁻² VS¹⁻² SI¹⁻² I¹⁻³

Internally Flawless	Very Very Slightly Included	Very Slightly Included	Slightly Included	Included
------------------------	--------------------------------	---------------------------	----------------------	----------

ADDITIONAL GRADING INFORMATION

Polish **EXCELLENT**Symmetry **EXCELLENT**Fluorescence **NONE**Inscription(s) LG694597218

Comments: This Laboratory Grown Diamond was created by Chemical Vapor Deposition (CVD) growth process.
Type IIa



IGI



© IGI 2020, International Gemological Institute

FD - 10 20

www.igi.org

THIS DOCUMENT WAS PRODUCED WITH THE FOLLOWING SECURITY MEASURES: SPECIAL DOCUMENT PAPER, INK SCREENS, WATERMARK BACKGROUND DESIGNS, HOLOGRAM AND OTHER SECURITY FEATURES NOT LISTED AND DO EXCEED DOCUMENT SECURITY INDUSTRY GUIDELINES

April 2, 2025
ICI Report No LG694597218
ROUND BRILLIANT

13.42 - 13.47 X 8.08 MM	9.04 CARATS	VS 1	EXCELLENT	60.1%	62%	Slightly Thick (Faceted)
Carat Weight		Clarity Grade	Out Grade	Depth	Table	Girdle
Color Grade	G					

Property	Rating
Culet	Pointed
Polish	EXCELLENT
Symmetry	EXCELLENT
Fluorescence	NONE

Comments:
This Laboratory Grown Diamond was created by Chemical Vapor Deposition (CVD) growth process, type IIa