



ELECTRONIC COPY

LG695502867
Report verification at igi.org



April 18, 2025

IGI Report Number **LG695502867**

Description **LABORATORY GROWN DIAMOND**

Shape and Cutting Style **OLD EUROPEAN CUT**

Measurements **6.27 - 6.30 X 3.90 MM**

GRADING RESULTS

Carat Weight **1.03 CARAT**

Color Grade **FANCY VIVID GREEN**

Clarity Grade **VS 1**

April 18, 2025

IGI Report Number **LG695502867**

Description **LABORATORY GROWN DIAMOND**

Shape and Cutting Style **OLD EUROPEAN CUT**

Measurements **6.27 - 6.30 X 3.90 MM**

GRADING RESULTS

Carat Weight **1.03 CARAT**

Color Grade **FANCY VIVID GREEN**

Clarity Grade **VS 1**

ADDITIONAL GRADING INFORMATION

Polish **EXCELLENT**

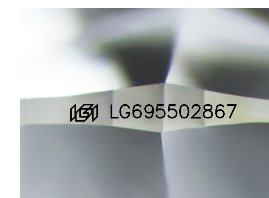
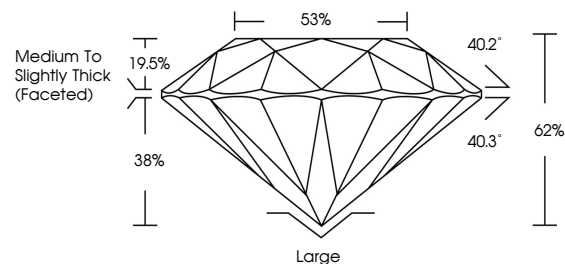
Symmetry **EXCELLENT**

Fluorescence **NONE**

Inscription(s) **IGI LG695502867**

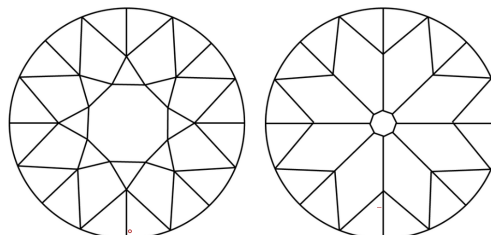
Comments: This Laboratory Grown Diamond was created by Chemical Vapor Deposition (CVD) growth process.
Indications of post-growth treatment.

PROPORTIONS



Sample Image Used

CLARITY CHARACTERISTICS



KEY TO SYMBOLS

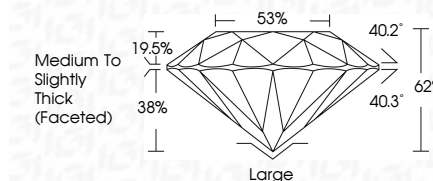
Red symbols indicate internal characteristics.
Green symbols indicate external characteristics.

COLOR

D E F G H I J Faint Very Light Light

CLARITY

IF	VS ¹⁻²	VS ¹⁻²	SI ¹⁻²	I ¹⁻³
Internally Flawless	Very Very Slightly Included	Very Slightly Included	Slightly Included	Included



ADDITIONAL GRADING INFORMATION

Polish **EXCELLENT**

Symmetry **EXCELLENT**

Fluorescence **NONE**

Inscription(s) **IGI LG695502867**

Comments: This Laboratory Grown Diamond was created by Chemical Vapor Deposition (CVD) growth process.
Indications of post-growth treatment.



April 18, 2025
IGI Report No LG695502867
OLD EUROPEAN CUT
6.27 - 6.30 X 3.90 MM
Carat Weight 1.03 CARAT
Color Grade FANCY VIVID GREEN
Clarity Grade VS 1
Depth 62%
Table 85%
Girdle Medium to Slightly Thick (Faceted)
Culet Large
Polish EXCELLENT
Symmetry EXCELLENT
Fluorescence NONE
Inscription(s) IGI LG695502867

Comments: This Laboratory Grown Diamond was created by Chemical Vapor Deposition (CVD) growth process.
Indications of post-growth treatment.