



**ELECTRONIC COPY**

## LABORATORY GROWN DIAMOND REPORT

LG695524970  
Report verification at [igi.org](http://igi.org)

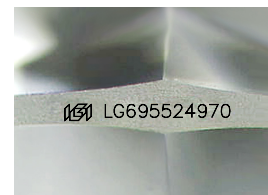
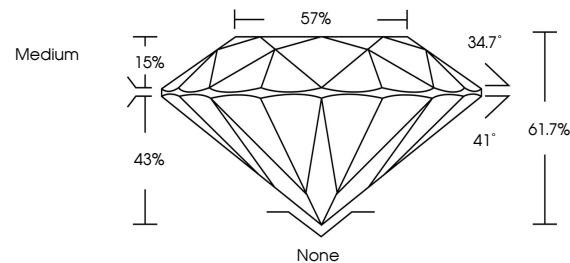
April 15, 2025	
IGI Report Number	LG695524970
Description	LABORATORY GROWN DIAMOND
Shape and Cutting Style	ROUND BRILLIANT
Measurements	8.19 - 8.21 X 5.06 MM
GRADING RESULTS	
Carat Weight	2.09 CARATS
Color Grade	E
Clarity Grade	VVS 2
Cut Grade	IDEAL

### ADDITIONAL GRADING INFORMATION

Polish	EXCELLENT
Symmetry	EXCELLENT
Fluorescence	NONE
Inscription(s)	 LG695524970

Comments: Pre-existing laser inscription on girdle.  
This Laboratory Grown Diamond was created by  
Chemical Vapor Deposition (CVD) growth process.  
Type IIa

## PROPORTIONS



Sample Image Used

## COLOR

D E F G H I J Faint Very Light Light

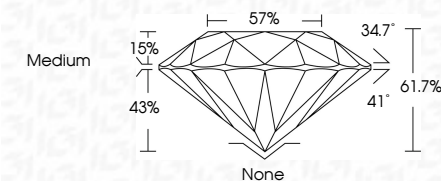
## CLARITY

IF	VS <sup>1-2</sup>	VS <sup>1-2</sup>	SI <sup>1-2</sup>	I <sup>1-3</sup>
Internally Flawless	Very Very Slightly Included	Very Slightly Included	Slightly Included	Included

## LABORATORY GROWN DIAMOND REPORT



April 15, 2025	
IGI Report Number	LG695524970
Description	LABORATORY GROWN DIAMOND
Shape and Cutting Style	ROUND BRILLIANT
Measurements	8.19 - 8.21 X 5.06 MM
GRADING RESULTS	
Carat Weight	2.09 CARATS
Color Grade	E
Clarity Grade	VVS 2
Cut Grade	IDEAL



### ADDITIONAL GRADING INFORMATION

Polish	EXCELLENT
Symmetry	EXCELLENT
Fluorescence	NONE
Inscription(s)	(修) LG695524970
<p>Comments: Pre-existing laser inscription on girdle.          This Laboratory Grown Diamond was created by          Chemical Vapor Deposition (CVD) growth process.          Type Ila</p>	



IG



© IGI 2020, International Gemological Institute

FD - 10 20



THIS DOCUMENT WAS PRODUCED WITH THE FOLLOWING SECURITY MEASURES: SPECIAL DOCUMENT PAPER, INK SCREENS, WATERMARK, BACKGROUND DESIGNS, HOLOGRAM AND OTHER SECURITY FEATURES NOT LISTED AND DO EXCEED DOCUMENT SECURITY INDUSTRY GUIDELINES

**www.igi.org**

April 15, 2025  
IGI Report No LG695524970  
ROUND BRILLIANT

18.19 - 8.21 X 5.05 MM	2.09 CARATS
Carat Weight	E
Color Grade	VVS 2
Clarity Grade	IDEAL
Cut Grade	61.7%
Depth	57%
Table	Medium
Girdle	
Culet	None
Polish	EXCELLENT
Symmetry	EXCELLENT
Fluorescence	NONE
Reported	100% (100% of 100%)

**Comments:**  
Pre-existing laser inscription on girdle.  
This Laboratory Grown Diamond was  
created by Chemical Vapor Deposition  
(CVD) growth process.