



**ELECTRONIC COPY**

LG696504011  
Report verification at igi.org



April 14, 2025  
IGI Report Number **LG696504011**  
Description **LABORATORY GROWN DIAMOND**  
Shape and Cutting Style **PRINCESS CUT**  
Measurements **8.32 X 8.01 X 5.73 MM**

**GRADING RESULTS**

Carat Weight **3.52 CARATS**  
Color Grade **D**  
Clarity Grade **VVS 2**

**LABORATORY GROWN DIAMOND REPORT**

April 14, 2025  
IGI Report Number **LG696504011**  
Description **LABORATORY GROWN DIAMOND**  
Shape and Cutting Style **PRINCESS CUT**  
Measurements **8.32 X 8.01 X 5.73 MM**

**GRADING RESULTS**

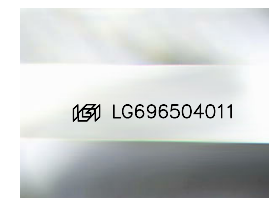
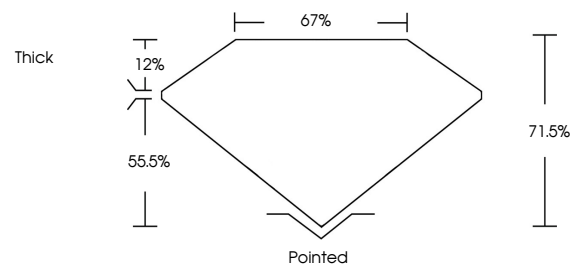
Carat Weight **3.52 CARATS**  
Color Grade **D**  
Clarity Grade **VVS 2**

**ADDITIONAL GRADING INFORMATION**

Polish **EXCELLENT**  
Symmetry **EXCELLENT**  
Fluorescence **NONE**  
Inscription(s) **IGI LG696504011**

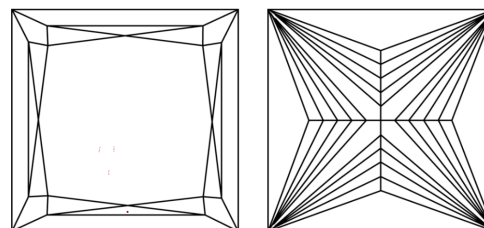
Comments: This Laboratory Grown Diamond was created by Chemical Vapor Deposition (CVD) growth process. Type IIa

**PROPORTIONS**



Sample Image Used

**CLARITY CHARACTERISTICS**



**KEY TO SYMBOLS**

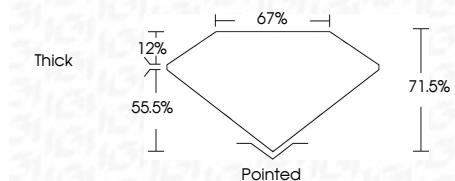
Red symbols indicate internal characteristics.  
Green symbols indicate external characteristics.

**COLOR**

D E F G H I J Faint Very Light Light

**CLARITY**

IF	VS <sup>1-2</sup>	VS <sup>1-2</sup>	SI <sup>1-2</sup>	I <sup>1-3</sup>
Internally Flawless	Very Very Slightly Included	Very Slightly Included	Slightly Included	Included



**ADDITIONAL GRADING INFORMATION**

Polish **EXCELLENT**  
Symmetry **EXCELLENT**  
Fluorescence **NONE**  
Inscription(s) **IGI LG696504011**  
Comments: This Laboratory Grown Diamond was created by Chemical Vapor Deposition (CVD) growth process. Type IIa



**IGI**



April 14, 2025  
IGI Report No **LG696504011**  
**PRINCESS CUT**  
**3.52 CARATS**  
Carat Weight **D**  
Color Grade **VVS 2**  
Clarity Grade **71.0%**  
Depth **67%**  
Table **Thick**  
Girdle  
Culet  
Polish **Pointed**  
Symmetry **EXCELLENT**  
Fluorescence **EXCELLENT**  
Inscription(s) **NONE**  
**IGI LG696504011**

Comments: This Laboratory Grown Diamond was created by Chemical Vapor Deposition (CVD) growth process. Type IIa