



**ELECTRONIC COPY**

## LABORATORY GROWN DIAMOND REPORT

LG696506916  
Report verification at [igi.org](https://igi.org)

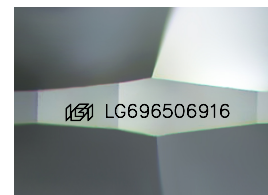
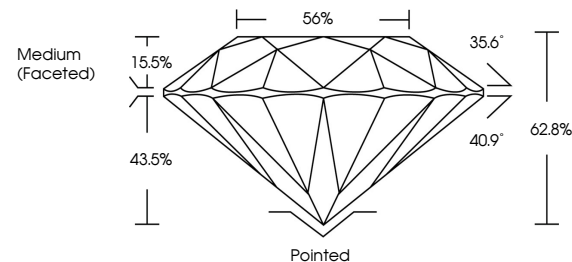
April 3, 2025	
IGI Report Number	LG696506916
Description	LABORATORY GROWN DIAMOND
Shape and Cutting Style	ROUND BRILLIANT
Measurements	6.43 - 6.46 X 4.05 MM
GRADING RESULTS	
Carat Weight	1.04 CARAT
Color Grade	D
Clarity Grade	VVS 2
Cut Grade	EXCELLENT

### ADDITIONAL GRADING INFORMATION

Polish	EXCELLENT
Symmetry	EXCELLENT
Fluorescence	NONE
Inscription(s)	151 LG696506916

Comments: This Laboratory Grown Diamond was created by Chemical Vapor Deposition (CVD) growth process.  
Type IIa

## PROPORTIONS



Sample Image Used

## COLOR

D E F G H I J Faint Very Light Light

## CLARITY

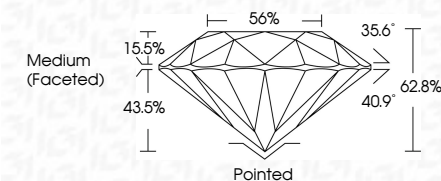
IF                      VS<sup>1-2</sup>                      VS<sup>1-2</sup>                      S<sup>1-2</sup>                      |<sup>1-3</sup>

Internally Flawless	Very Very Slightly Included	Very Slightly Included	Slightly Included	Included
------------------------	--------------------------------	---------------------------	----------------------	----------

## LABORATORY GROWN DIAMOND REPORT



April 3, 2025	
IGI Report Number	LG696506916
Description	LABORATORY GROWN DIAMOND
Shape and Cutting Style	ROUND BRILLIANT
Measurements	6.43 - 6.46 X 4.05 MM
GRADING RESULTS	
Carat Weight	1.04 CARAT
Color Grade	D
Clarity Grade	VVS 2
Cut Grade	EXCELLENT



### ADDITIONAL GRADING INFORMATION

Polish	EXCELLENT
Symmetry	EXCELLENT
Fluorescence	NONE
Inscription(s)	 LG-696506916
Comments: This Laboratory Grown Diamond was created by Chemical Vapor Deposition (CVD) growth process.	
Type IIa	



© IGI 2020, International Gemological Institute

FD - 10 20

**www.igi.org**



THIS DOCUMENT WAS PRODUCED WITH THE FOLLOWING SECURITY MEASURES: SPECIAL DOCUMENT PAPER, INK SCREENS, WATERMARK, BACKGROUND DESIGNS, HOLOGRAM AND OTHER SECURITY FEATURES NOT LISTED AND DO EXCEED DOCUMENT SECURITY INDUSTRY GUIDELINES

April 3, 2025  
ICI Report No LG696506916  
ROUND BRILLIANT

<b>6.43 - 6.46 X 4.05 MM</b>	<b>1.04 CARAT</b>
Carat Weight	<b>D</b>
Color Grade	<b>VVS 2</b>
Clarity Grade	<b>EXCELLENT</b>
Cut Grade	<b>62.8%</b>
Depth	<b>56%</b>
Table	<b>Medium (Faceted)</b>
Girdle	

Culet	Pointed
Polish	EXCELLENT
Symmetry	EXCELLENT
Fluorescence	NONE

**Comments:**  
This Laboratory Grown Diamond was created by Chemical Vapor Deposition (CVD) growth process.