



ELECTRONIC COPY

LABORATORY GROWN DIAMOND REPORT

LG696508628
Report verification at igi.org

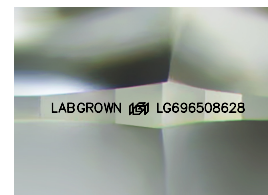
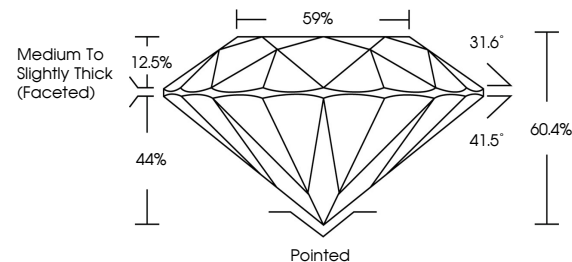
April 11, 2025	
IGI Report Number	LG696508628
Description	LABORATORY GROWN DIAMOND
Shape and Cutting Style	ROUND BRILLIANT
Measurements	10.69 - 10.74 X 6.48 MM
GRADING RESULTS	
Carat Weight	4.52 CARATS
Color Grade	E
Clarity Grade	VVS 2
Cut Grade	EXCELLENT

ADDITIONAL GRADING INFORMATION

Polish	EXCELLENT
Symmetry	EXCELLENT
Fluorescence	NONE
Inscription(s)	LABGROWN 15 LG696508628

Comments: This Laboratory Grown Diamond was created by Chemical Vapor Deposition (CVD) growth process.
Type IIa

PROPORTIONS



Sample Image Used

COLOR

D E F G H I J Faint Very Light Light

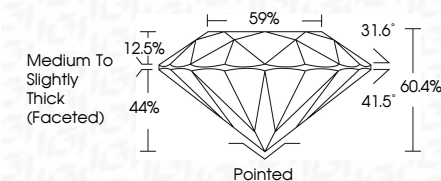
CLARITY

IF	VS ¹⁻²	VS ¹⁻²	SI ¹⁻²	I ¹⁻³
Internally Flawless	Very Very Slightly Included	Very Slightly Included	Slightly Included	Included

LABORATORY GROWN DIAMOND REPORT



April 11, 2025	
IGI Report Number	LG696508628
Description	LABORATORY GROWN DIAMOND
Shape and Cutting Style	ROUND BRILLIANT
Measurements	10.69 - 10.74 X 6.48 MM
GRADING RESULTS	
Carat Weight	4.52 CARATS
Color Grade	E
Clarity Grade	VVS 2
Cut Grade	EXCELLENT



ADDITIONAL GRADING INFORMATION

Polish	EXCELLENT
Symmetry	EXCELLENT
Fluorescence	NONE
Inscription(s)	LABGROWN (10) LG696508628
Comments: This Laboratory Grown Diamond was created by Chemical Vapor Deposition (CVD) growth process. Type IIa	



© IGI 2020, International Gemological Institute

FD - 10 20

www.igi.org



THIS DOCUMENT WAS PRODUCED WITH THE FOLLOWING SECURITY MEASURES: SPECIAL DOCUMENT PAPER, INK SCREENS, WATERMARK, BACKGROUND DESIGNS, HOLOGRAM AND OTHER SECURITY FEATURES NOT LISTED AND DO EXCEED DOCUMENT SECURITY INDUSTRY GUIDELINES

April 11, 2025
ICI Report No LG696508628
ROUND BRILLIANT

10.69 - 10.74 X 4.49 MM	4.52 CARATS
Carat Weight	E
Color Grade	VVS 2
Clarity Grade	EXCELLENT
Cut Grade	60.4%
Depth	59%
Table	Medium to slightly
Grade	Thick (Faceted)
Culet	Pointed
Polish	EXCELLENT
Symmetry	EXCELLENT
Fluorescence	NONE
Inscriptions(s)	LABGROWN 1g LS96000658

Comments: This Laboratory Grown Diamond was created by Chemical Vapor Deposition (CVD) growth process.

Comments:
This Laboratory Grown Diamond was created by Chemical Vapor Deposition (CVD) growth process.