

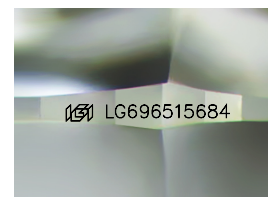
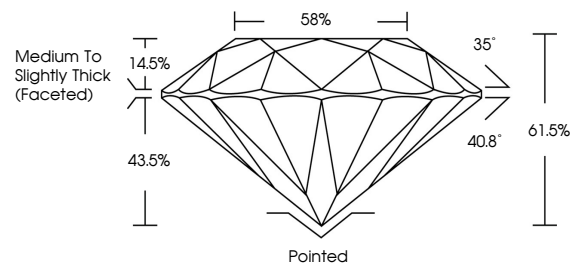


ELECTRONIC COPY

LABORATORY GROWN DIAMOND REPORT

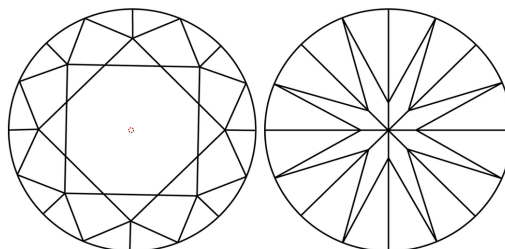
LG696515684
Report verification at igi.org

PROPORTIONS



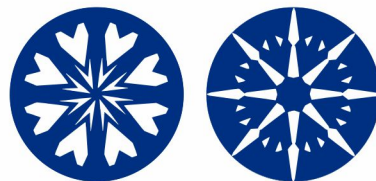
Sample Image Used

CLARITY CHARACTERISTICS



KEY TO SYMBOLS

Red symbols indicate internal characteristics.
Green symbols indicate external characteristics.



www.igi.org

COLOR

D E F G H I J Faint Very Light Light

CLARITY

IF WS¹⁻² VS¹⁻² SI¹⁻² |¹⁻³

Internally Flawless	Very Very Slightly Included	Very Slightly Included	Slightly Included	Included
------------------------	--------------------------------	---------------------------	----------------------	----------



© IGI 2020, International Gemological Institute

FD - 10 20

THIS DOCUMENT WAS PRODUCED WITH THE FOLLOWING SECURITY MEASURES: SPECIAL DOCUMENT PAPER, INK SCREENS, WATERMARK, BACKGROUND DESIGNS, HOLOGRAM AND OTHER SECURITY FEATURES NOT LISTED AND DO EXCEED DOCUMENT SECURITY INDUSTRY GUIDELINE

LABORATORY GROWN DIAMOND REPORT



April 3, 2025

IGI Report Number **LG696515684**

Description	LABORATORY GROWN DIAMOND
-------------	--------------------------

Shape and Cutting Style **ROUND BRILLIANT**

Measurements 8.11 - 8.16 X 5.00 MM

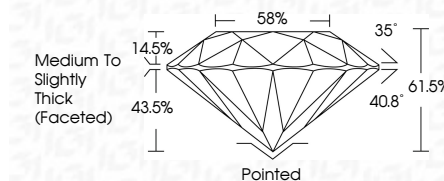
GRADING RESULTS

Carat Weight **2.05 CARATS**

Color Grade D

Clarity Grade WS 1

Cut Grade **IDEAL**



ADDITIONAL GRADING INFORMATION

Polish **EXCELLENT**Symmetry **EXCELLENT**Fluorescence **NONE**Inscription(s)  LG696515684

Comments: HEARTS & ARROWS

As Grown - No indication of post-growth treatment.

This Laboratory Grown Diamond was created by High Pressure High Temperature (HPHT) growth process.

Type II



IG

April 3, 2025	Report No. LG96615684	2.05 CARATS
ROUND BRILLIANT		
11.11 - 8.15 X 5.00 MM		
Carat Weight	Color Grade	D
Clarity Grade	Clarity	VVS 1
Cut Grade	Cut	IDEAL
Depth	Table	61.5%
Girdle	Girdle	55%
		Medium to Slightly Thick (Faceted)
Culet	Polished	
Polish	EXCELLENT	
Symmetry	EXCELLENT	
Fluorescence	NONE	
Inscriptions	lg91 LG96615684	
Comments:		
- HARS & ARROWS - No indication of post-growth treatment.		
- This Laboratory Grown Diamond was created by High Pressure High Temperature (HPHT) growth process.		