

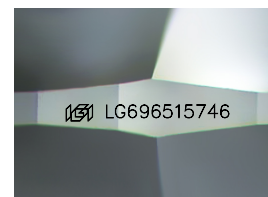
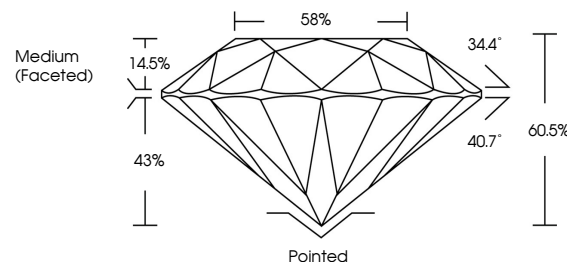


**ELECTRONIC COPY**

## LABORATORY GROWN DIAMOND REPORT

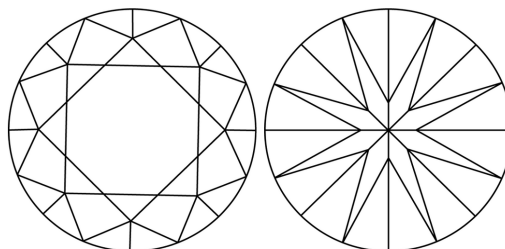
LG696515746  
Report verification at [lgi.org](https://lgi.org)

## PROPORTIONS



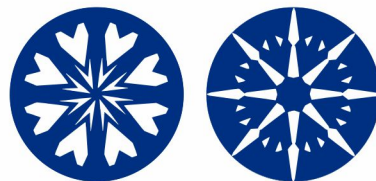
Sample Image Used

## CLARITY CHARACTERISTICS



### KEY TO SYMBOLS

Red symbols indicate internal characteristics.  
Green symbols indicate external characteristics.



**www.igi.org**

## LABORATORY GROWN DIAMOND REPORT



April 11, 2025

IGI Report Number **LG696515746**Description **LABORATORY GROWN DIAMOND**Shape and Cutting Style **ROUND BRILLIANT**

Measurements 9.10 - 9.17 X 5.52 MM

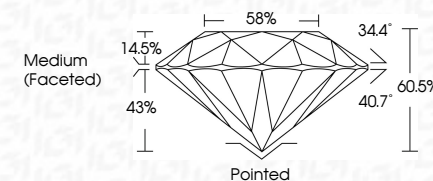
## GRADING RESULTS

Carat Weight **2.81 CARATS**

Color Grade D

Clarity Grade **INTERNALLY FLAWLESS**

Cut Grade **IDEAL**



### ADDITIONAL GRADING INFORMATION

Polish **EXCELLENT**Symmetry **EXCELLENT**Fluorescence **NONE**Inscription(s)  LG696515746

Comments: HEARTS & ARROWS

As Grown - No indication of post-growth treatment.

This Laboratory Grown Diamond was created by High Pressure High Temperature (HPHT) growth process.

Type II



IG

<b>April 11, 2026</b>	<b>2.81 CARATS</b>
<b>G Report No LG996515746</b>	<b>D</b>
<b>ROUND BRILLIANT</b>	<b>IF</b>
<b>10 - 10 - 10 X 7 X 5.62 MM</b>	<b>IDEL</b>
<b>Color Weight</b>	<b>60.0%</b>
<b>Carat Grade</b>	<b>58%</b>
<b>Clarity Grade</b>	<b>Medium (Faceted)</b>
<b>Cut Grade</b>	<b>Pointed</b>
<b>Depth</b>	<b>EXCELLENT</b>
<b>Table</b>	<b>EXCELLENT</b>
<b>Girdle</b>	<b>NONE</b>
	<b>lg915696515746</b>
<b>Comments:</b>	
-R&S & AROWS	
No indication of post-growth treatment.	
This Laboratory Grown Diamond was created by High Pressure High Temperature (HPHT) growth process.	

© IGI 2020, International Gemological Institute

FD - 10 20



THIS DOCUMENT WAS PRODUCED WITH THE FOLLOWING SECURITY MEASURES: SPECIAL DOCUMENT PAPER, INK SCREENS, WATERMARK, BACKGROUND DESIGNS, HOLOGRAM AND OTHER SECURITY FEATURES NOT LISTED AND DO EXCEED DOCUMENT SECURITY INDUSTRY GUIDELINE