



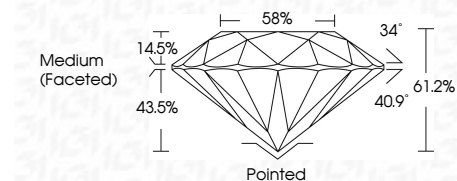
ELECTRONIC COPY

LG696536041
Report verification at igi.org



April 8, 2025
IGI Report Number LG696536041
Description LABORATORY GROWN DIAMOND
Shape and Cutting Style ROUND BRILLIANT
Measurements 10.23 - 10.26 X 6.27 MM

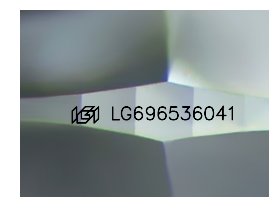
GRADING RESULTS
Carat Weight 4.03 CARATS
Color Grade E
Clarity Grade VS 2
Cut Grade IDEAL



ADDITIONAL GRADING INFORMATION
Polish EXCELLENT
Symmetry EXCELLENT
Fluorescence NONE
Inscription(s) IGI LG696536041
Comments: HEARTS & ARROWS
This Laboratory Grown Diamond was created by Chemical Vapor Deposition (CVD) growth process. Type IIa

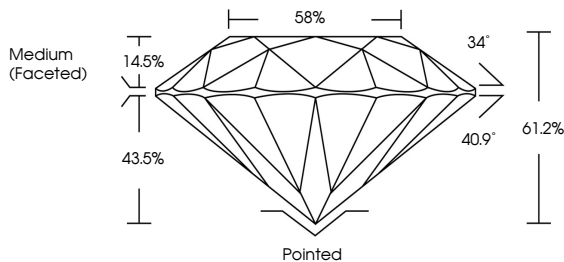


April 8, 2025
IGI Report No LG696536041
ROUND BRILLIANT
10.23 - 10.26 X 6.27 MM
4.03 CARATS
E
VS 2
IDEAL
61.2%
58%
Medium (Faceted)
Pointed
EXCELLENT
EXCELLENT
NONE
IGI LG696536041
Comments: HEARTS & ARROWS
This Laboratory Grown Diamond was created by Chemical Vapor Deposition (CVD) growth process. Type IIa

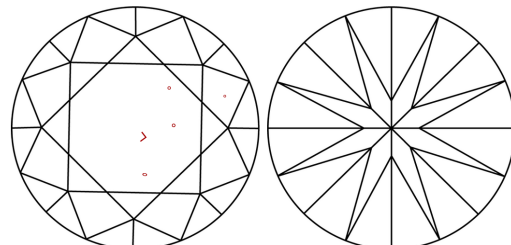


Sample Image Used

PROPORTIONS



CLARITY CHARACTERISTICS



KEY TO SYMBOLS
Red symbols indicate internal characteristics.
Green symbols indicate external characteristics.



COLOR

Table with columns D, E, F, G, H, I, J, Faint, Very Light, Light

CLARITY

Table with columns IF, VS 1-2, VS 1-2, SI 1-2, I 1-3 and corresponding descriptions: Internally Flawless, Very Very Slightly Included, Very Slightly Included, Slightly Included, Included



April 8, 2025
IGI Report Number LG696536041
Description LABORATORY GROWN DIAMOND
Shape and Cutting Style ROUND BRILLIANT
Measurements 10.23 - 10.26 X 6.27 MM

GRADING RESULTS
Carat Weight 4.03 CARATS
Color Grade E
Clarity Grade VS 2
Cut Grade IDEAL

ADDITIONAL GRADING INFORMATION
Polish EXCELLENT
Symmetry EXCELLENT
Fluorescence NONE
Inscription(s) IGI LG696536041

Comments: HEARTS & ARROWS
This Laboratory Grown Diamond was created by Chemical Vapor Deposition (CVD) growth process. Type IIa