



**INTERNATIONAL
GEMOLOGICAL
INSTITUTE**

ELECTRONIC COPY

LG696540816
Report verification at igi.org

LABORATORY GROWN DIAMOND REPORT



April 9, 2025

IGI Report Number LG696540816

Description **LABORATORY GROWN DIAMOND**Shape and Cutting Style **OVAL BRILLIANT**

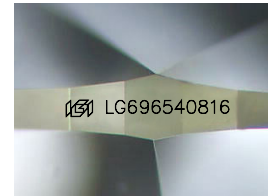
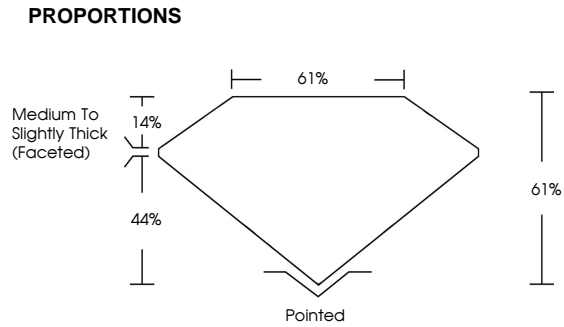
Measurements	14.27 X 9.62 X 5.87 MM
--------------	------------------------

GRADING RESULTS

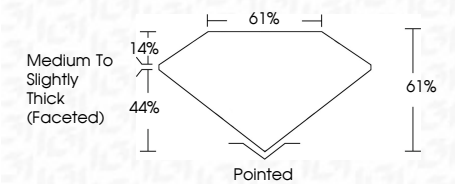
Carat Weight **5.05 CARATS**

Color Grade **G**

Clarity Grade VS 1



Sample Image Used



COLOR

D E F G H I J Faint Very Light Light

CLARITY

IF WS¹⁻² VS¹⁻² SI¹⁻² I¹⁻³

Internally Flawless	Very Very Slightly Included	Very Slightly Included	Slightly Included	Included
------------------------	--------------------------------	---------------------------	----------------------	----------

ADDITIONAL GRADING INFORMATION

Polish **EXCELLENT**Symmetry **EXCELLENT**Fluorescence **NONE**Inscription(s) LG696540816

Comments: This Laboratory Grown Diamond was created by Chemical Vapor Deposition (CVD) growth process.
Type IIa



IGI



© IGI 2020, International Gemological Institute

FD - 10 20

www.igi.org

THIS DOCUMENT WAS PRODUCED WITH THE FOLLOWING SECURITY MEASURES: SPECIAL DOCUMENT PAPER, INK SCREENS, WATERMARK, RADIOGRAPHIC DETECTING, HIGH-GRAMMAR, AND OTHER SECURITY FEATURES NOT LISTED. ALL INFO DISCLOSED COULD BE USED BY ENEMIES TO HARM THE U.S. GOVERNMENT.

April 9, 2025
 LGI Report No LG696540816

G VS 1 61% 61%	5.05 CARATS Medium to Slightly Thick Faceted	Panted EXCELLENT EXCELLENT NONE	1691 LG96560816
14.27 X 9.62 X 5.87 MM Carat Weight Color Grade Clarity Grade Depth Table Girdle Culet Polish Symmetry Fluorescence Inclusions	5.05 CARATS VS 1 61% 61% Medium to Slightly Thick Faceted Panted EXCELLENT EXCELLENT NONE 1691 LG96560816	14.27 X 9.62 X 5.87 MM Carat Weight Color Grade Clarity Grade Depth Table Girdle Culet Polish Symmetry Fluorescence Inclusions	G VS 1 61% 61% Medium to Slightly Thick Faceted Panted EXCELLENT EXCELLENT NONE 1691 LG96560816

Comments:
This Laboratory Grown Diamond was created by Chemical Vapor Deposition (CVD) growth process.
Type IIa