



**ELECTRONIC COPY**

## LABORATORY GROWN DIAMOND REPORT

LG696542752  
Report verification at [igi.org](https://igi.org)

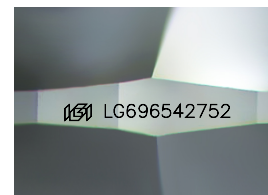
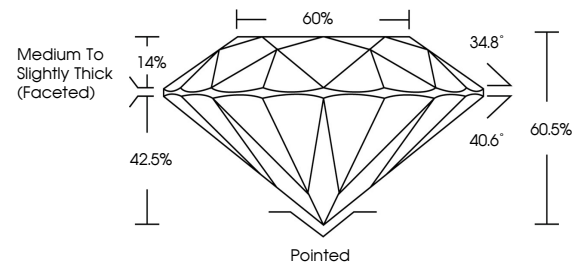
|                         |                          |
|-------------------------|--------------------------|
| April 15, 2025          |                          |
| IGI Report Number       | LG696542752              |
| Description             | LABORATORY GROWN DIAMOND |
| Shape and Cutting Style | ROUND BRILLIANT          |
| Measurements            | 8.11 - 8.15 X 4.92 MM    |
| GRADING RESULTS         |                          |
| Carat Weight            | 2.02 CARATS              |
| Color Grade             | E                        |
| Clarity Grade           | VVS 2                    |
| Cut Grade               | IDEAL                    |

### ADDITIONAL GRADING INFORMATION

|                |                                                                                                 |
|----------------|-------------------------------------------------------------------------------------------------|
| Polish         | EXCELLENT                                                                                       |
| Symmetry       | EXCELLENT                                                                                       |
| Fluorescence   | NONE                                                                                            |
| Inscription(s) |  LG696542752 |

Comments: This Laboratory Grown Diamond was created by Chemical Vapor Deposition (CVD) growth process.  
Type IIa

## PROPORTIONS



Sample Image Used

## COLOR

D E F G H I J Faint Very Light Light

## CLARITY

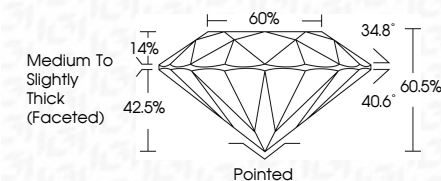
IF                      VS<sup>1-2</sup>                      VS<sup>1-2</sup>                      S<sup>1-2</sup>                      |<sup>1-3</sup>

| Internally<br>Flawless | Very Very<br>Slightly Included | Very<br>Slightly Included | Slightly<br>Included | Included |
|------------------------|--------------------------------|---------------------------|----------------------|----------|
|------------------------|--------------------------------|---------------------------|----------------------|----------|

## LABORATORY GROWN DIAMOND REPORT



|                         |                          |
|-------------------------|--------------------------|
| April 15, 2025          |                          |
| IGI Report Number       | LG696542752              |
| Description             | LABORATORY GROWN DIAMOND |
| Shape and Cutting Style | ROUND BRILLIANT          |
| Measurements            | 8.11 - 8.15 X 4.92 MM    |
| GRADING RESULTS         |                          |
| Carat Weight            | 2.02 CARATS              |
| Color Grade             | E                        |
| Clarity Grade           | VVS 2                    |
| Cut Grade               | IDEAL                    |



### ADDITIONAL GRADING INFORMATION

|                                                                                                        |                                                                                                  |
|--------------------------------------------------------------------------------------------------------|--------------------------------------------------------------------------------------------------|
| Polish                                                                                                 | EXCELLENT                                                                                        |
| Symmetry                                                                                               | EXCELLENT                                                                                        |
| Fluorescence                                                                                           | NONE                                                                                             |
| Inscription(s)                                                                                         |  LG-696542752 |
| Comments: This Laboratory Grown Diamond was created by Chemical Vapor Deposition (CVD) growth process. |                                                                                                  |
| Type IIa                                                                                               |                                                                                                  |



© IGI 2020, International Gemological Institute

FD - 10 20



THIS DOCUMENT WAS PRODUCED WITH THE FOLLOWING SECURITY MEASURES: SPECIAL DOCUMENT PAPER, INK SCREENS, WATERMARK, BACKGROUND DESIGNS, HOLOGRAM AND OTHER SECURITY FEATURES NOT LISTED AND DO EXCEED DOCUMENT SECURITY INDUSTRY GUIDELINES

**www.igi.org**

