

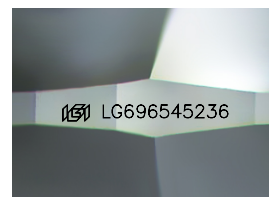
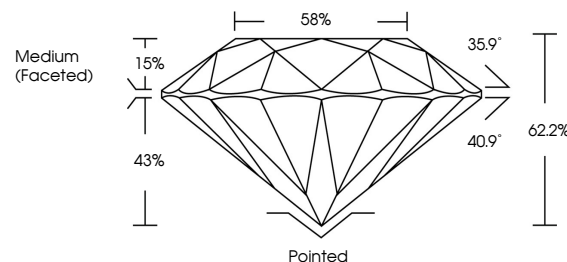


**ELECTRONIC COPY**

## LABORATORY GROWN DIAMOND REPORT

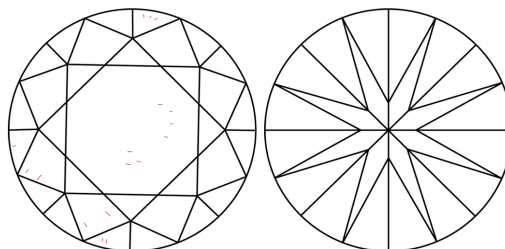
LG696545236  
Report verification at [lgi.org](https://lgi.org)

## PROPORTIONS



Sample Image Used

## CLARITY CHARACTERISTICS



## KEY TO SYMBOLS

Red symbols indicate internal characteristics.  
Green symbols indicate external characteristics.

## COLOR

D E F G H I J Faint Very Light Light

## CLARITY

IF WS<sup>1-2</sup> VS<sup>1-2</sup> SI<sup>1-2</sup> |<sup>1-3</sup>

Internally Flawless	Very Very Slightly Included	Very Slightly Included	Slightly Included	Included
------------------------	--------------------------------	---------------------------	----------------------	----------



© IGI 2020, International Gemological Institute

FD - 10 20

**www.igi.org**

## LABORATORY GROWN DIAMOND REPORT



April 7, 2025

IGI Report Number **LG696545236**Description **LABORATORY GROWN DIAMOND**Shape and Cutting Style **ROUND BRILLIANT**

Measurements	6.43 - 6.45 X 4.00 MM
--------------	-----------------------

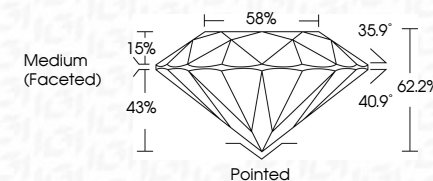
## GRADING RESULTS

Carat Weight 1.03 CARAT

Color Grade	D
-------------	---

Clarity Grade **VVS 2**

Cut Grade **IDEAL**



### ADDITIONAL GRADING INFORMATION

Polish **EXCELLENT**Symmetry **EXCELLENT**Fluorescence **NONE**Inscription(s)  LG696545236

Comments: As Grown - No indication of post-growth treatment.

This Laboratory Grown Diamond was created by High Pressure High Temperature (HPHT) growth process.  
Type II



April 7, 2025	IGI Report No. LG596562636	ROUND BRILLIANT	4.65 X 4.00 MM	1.08 CARAT
Color	Weight	Clarity	Cut	D
Grade	Grade	Grade	Grade	VVS 2
Depth	Table	Grade	Grade	IDEAL
58%	58%	58%	58%	58%
Medium	Medium	Medium	Medium	Medium
Polished	Polished	Polished	Polished	Polished
EXCELLENT	EXCELLENT	EXCELLENT	EXCELLENT	EXCELLENT
EXCELLENT	EXCELLENT	EXCELLENT	EXCELLENT	EXCELLENT
NONE	NONE	NONE	NONE	NONE
IGI LG596562636	IGI LG596562636	IGI LG596562636	IGI LG596562636	IGI LG596562636

Comments: As Grown - No indication of post-growth treatment.  
The Laboratory Grown Diamond was created by High Pressure High Temperature (HPHT) growth process.