



**ELECTRONIC COPY**

## LABORATORY GROWN DIAMOND REPORT

LG696547682  
Report verification at [igi.org](https://www.igi.org)

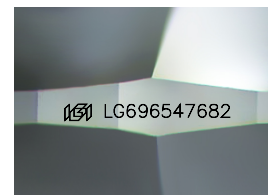
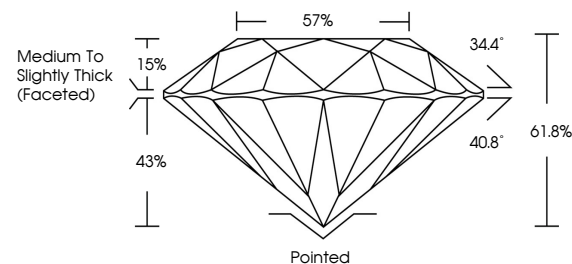
April 11, 2025	
IGI Report Number	LG696547682
Description	LABORATORY GROWN DIAMOND
Shape and Cutting Style	ROUND BRILLIANT
Measurements	6.88 - 6.89 X 4.25 MM
GRADING RESULTS	
Carat Weight	1.24 CARAT
Color Grade	D
Clarity Grade	VS 2
Cut Grade	IDEAL

### ADDITIONAL GRADING INFORMATION

Polish	EXCELLENT
Symmetry	EXCELLENT
Fluorescence	NONE
Inscription(s)	 LG696547682

Comments: This Laboratory Grown Diamond was created by Chemical Vapor Deposition (CVD) growth process.  
Type IIa

## PROPORTIONS



Sample Image Used

## COLOR

D E F G H I J Faint Very Light Light

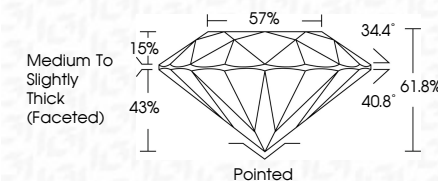
## CLARITY

IF	VS <sup>1-2</sup>	VS <sup>1-2</sup>	SI <sup>1-2</sup>	I <sup>1-3</sup>
Internally Flawless	Very Very Slightly Included	Very Slightly Included	Slightly Included	Included

## LABORATORY GROWN DIAMOND REPORT



April 11, 2025	
IGI Report Number	LG696547682
Description	LABORATORY GROWN DIAMOND
Shape and Cutting Style	ROUND BRILLIANT
Measurements	6.88 - 6.89 X 4.25 MM
GRADING RESULTS	
Carat Weight	1.24 CARAT
Color Grade	D
Clarity Grade	VS 2
Cut Grade	IDEAL



### ADDITIONAL GRADING INFORMATION

Polish	EXCELLENT
Symmetry	EXCELLENT
Fluorescence	NONE
Inscription(s)	 LG696547682
<p>Comments: This Laboratory Grown Diamond was created by Chemical Vapor Deposition (CVD) growth process.</p> <p>Type IIa</p>	



© IGI 2020, International Gemological Institute

FD - 10 20

**www.igi.org**



THIS DOCUMENT WAS PRODUCED WITH THE FOLLOWING SECURITY MEASURES: SPECIAL DOCUMENT PAPER, INK SCREENS, WATERMARK, BACKGROUND DESIGNS, HOLOGRAM AND OTHER SECURITY FEATURES NOT LISTED AND DO EXCEED DOCUMENT SECURITY INDUSTRY GUIDELINES.

April 11, 2025  
GI Report No LG696547682

Report No. LG596547482	1.24 CARAT
ROUND BRILLIANT	D
8.88 - 8.89 X 4.25 MM	VS 2
Carat Weight	IDEAL
Color Grade	61.8%
Clarity Grade	57%
Our Grade	Medium to Slightly Thick (Faceted)
Depth	Polished
Table	EXCELLENT
Girdle	EXCELLENT
	Symmetry
	Fluorescence
	NONE

**Comments:**  
This Laboratory Grown Diamond was  
created by Chemical Vapor Deposition  
(CVD) growth process.