

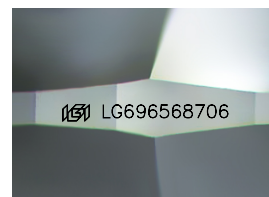
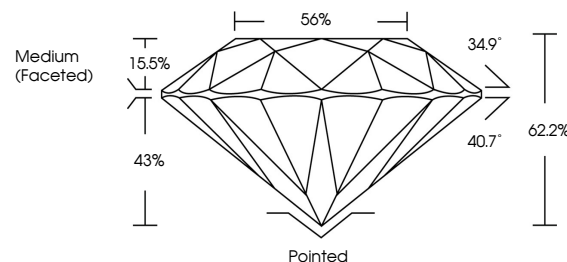


ELECTRONIC COPY

LABORATORY GROWN DIAMOND REPORT

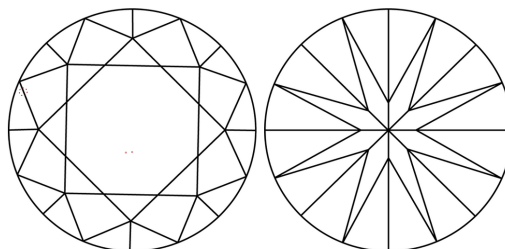
LG696568706
Report verification at lgi.org

PROPORTIONS



Sample Image Used

CLARITY CHARACTERISTICS



KEY TO SYMBOLS

Red symbols indicate internal characteristics.
Green symbols indicate external characteristics.

COLOR

D E F G H I J Faint Very Light Light

CLARITY

IF WS¹⁻² VS¹⁻² SI¹⁻² |¹⁻³

Internally Flawless	Very Very Slightly Included	Very Slightly Included	Slightly Included	Included
------------------------	--------------------------------	---------------------------	----------------------	----------



© IGI 2020, International Gemological Institute

FD - 10 20

www.igi.org

LABORATORY GROWN DIAMOND REPORT



April 9, 2025

IGI Report Number **LG696568706**Description **LABORATORY GROWN DIAMOND**Shape and Cutting Style **ROUND BRILLIANT**

Measurements 6.54 - 6.59 X 4.08 MM

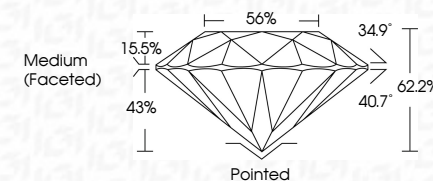
GRADING RESULTS

Carat Weight 1.10 CARAT

Color Grade

Clarity Grade VS 1

Cut Grade **IDEAL**



ADDITIONAL GRADING INFORMATION

Polish **EXCELLENT**

Symmetry **EXCELLENT**

Fluorescence **NONE**Inscription(s) LG696568700

Comments: As Grown - No indication of post-growth treatment.

This Laboratory Grown Diamond was created by High Pressure High Temperature (HPHT) growth process.

Type II



April 9, 2025	GI Report No LG94565705	ROUND BRILLIANT	1.10 CARAT	D	VS 1	IDEAL	62.2%	56%	Medium (Faceted)	Polished	EXCELLENT	NONE	lg91LG945656705	Comments: 1. Growth - No indication of post-growth 2. Color - No color change observed 3. This Laboratory Growth Diamond was created by High Pressure High Temperature (HPHT) growth process. Type II
			4.54 - 4.59 X 4.08 MM	Carat Weight	Clarity Grade	Color Grade	Cut Grade	Depth	Table	Symmetry	Fluorescence	Inscriptions		