



ELECTRONIC COPY

LG696569022
Report verification at igi.org



April 18, 2025
IGI Report Number **LG696569022**
Description **LABORATORY GROWN DIAMOND**
Shape and Cutting Style **OLD EUROPEAN CUT**
Measurements **7.21 - 7.23 X 4.37 MM**
GRADING RESULTS
Carat Weight **1.56 CARAT**
Color Grade **FANCY INTENSE GREEN**
Clarity Grade **VS 1**

April 18, 2025
IGI Report Number **LG696569022**
Description **LABORATORY GROWN DIAMOND**
Shape and Cutting Style **OLD EUROPEAN CUT**
Measurements **7.21 - 7.23 X 4.37 MM**

GRADING RESULTS

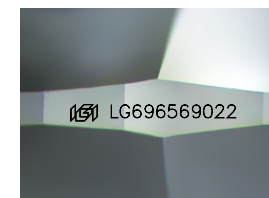
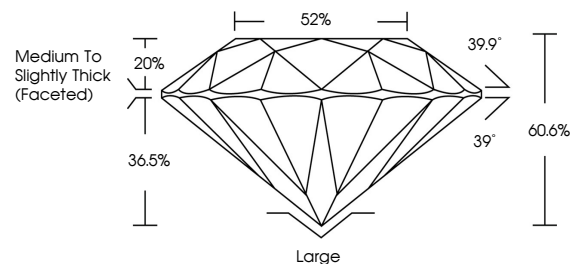
Carat Weight **1.56 CARAT**
Color Grade **FANCY INTENSE GREEN**
Clarity Grade **VS 1**

ADDITIONAL GRADING INFORMATION

Polish **EXCELLENT**
Symmetry **EXCELLENT**
Fluorescence **NONE**
Inscription(s) **IGI LG696569022**

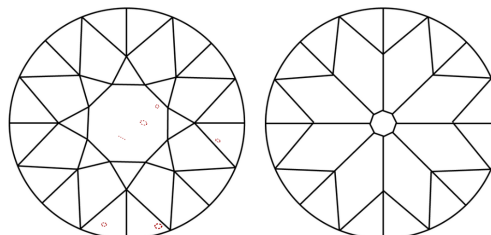
Comments: This Laboratory Grown Diamond was created by Chemical Vapor Deposition (CVD) growth process.
Indications of post-growth treatment.

PROPORTIONS



Sample Image Used

CLARITY CHARACTERISTICS



KEY TO SYMBOLS

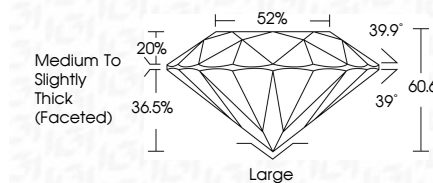
Red symbols indicate internal characteristics.
Green symbols indicate external characteristics.

COLOR

D E F G H I J Faint Very Light Light

CLARITY

IF	VS ¹⁻²	VS ¹⁻²	SI ¹⁻²	I ¹⁻³
Internally Flawless	Very Very Slightly Included	Very Slightly Included	Slightly Included	Included



ADDITIONAL GRADING INFORMATION

Polish **EXCELLENT**
Symmetry **EXCELLENT**
Fluorescence **NONE**
Inscription(s) **IGI LG696569022**
Comments: This Laboratory Grown Diamond was created by Chemical Vapor Deposition (CVD) growth process.
Indications of post-growth treatment.



April 18, 2025
IGI Report No **LG696569022**
OLD EUROPEAN CUT
7.21 - 7.23 X 4.37 MM
Carat Weight **1.56 CARAT**
Color Grade **FANCY INTENSE GREEN**
Clarity Grade **VS 1**
Depth **60.6%**
Table **82%**
Girdle **Medium to Slightly Thick (Faceted)**
Culet **Large**
Polish **EXCELLENT**
Symmetry **EXCELLENT**
Fluorescence **NONE**
Inscription(s) **IGI LG696569022**
Comments: This Laboratory Grown Diamond was created by Chemical Vapor Deposition (CVD) growth process.
Indications of post-growth treatment.