



**ELECTRONIC COPY**

## LABORATORY GROWN DIAMOND REPORT

LG696576549  
Report verification at [igi.org](https://igi.org)

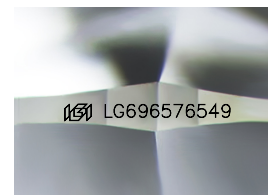
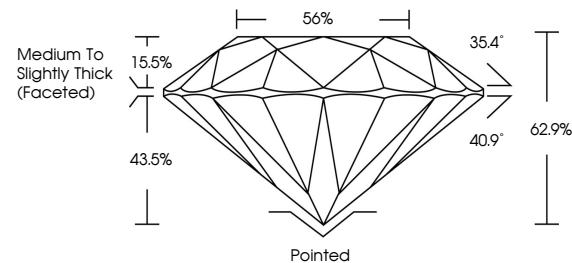
April 16, 2025	
IGI Report Number	LG696576549
Description	LABORATORY GROWN DIAMOND
Shape and Cutting Style	ROUND BRILLIANT
Measurements	7.97 - 8.03 X 5.03 MM
GRADING RESULTS	
Carat Weight	2.00 CARATS
Color Grade	D
Clarity Grade	VS 2
Cut Grade	EXCELLENT

### ADDITIONAL GRADING INFORMATION

Polish	EXCELLENT
Symmetry	EXCELLENT
Fluorescence	NONE
Inscription(s)	 LG696576549

Comments: This Laboratory Grown Diamond was created by Chemical Vapor Deposition (CVD) growth process.  
Type IIa

## PROPORTIONS



Sample Image Used

## COLOR

D E F G H I J Faint Very Light Light

## CLARITY

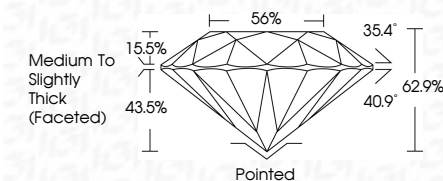
IF                      VS<sup>1-2</sup>                      VS<sup>1-2</sup>                      S<sup>1-2</sup>                      |<sup>1-3</sup>

Internally Flawless	Very Very Slightly Included	Very Slightly Included	Slightly Included	Included
------------------------	--------------------------------	---------------------------	----------------------	----------

## LABORATORY GROWN DIAMOND REPORT



April 16, 2025	
IGI Report Number	LG696576549
Description	LABORATORY GROWN DIAMOND
Shape and Cutting Style	ROUND BRILLIANT
Measurements	7.97 - 8.03 X 5.03 MM
GRADING RESULTS	
Carat Weight	2.00 CARATS
Color Grade	D
Clarity Grade	VS 2
Cut Grade	EXCELLENT



### ADDITIONAL GRADING INFORMATION

Polish	EXCELLENT
Symmetry	EXCELLENT
Fluorescence	NONE
Inscription(s)	 LG696576549
<p>Comments: This Laboratory Grown Diamond was created by Chemical Vapor Deposition (CVD) growth process.</p> <p>Type IIa</p>	



© IGI 2020, International Gemological Institute

FD - 10 20

**www.igi.org**



THIS DOCUMENT WAS PRODUCED WITH THE FOLLOWING SECURITY MEASURES: SPECIAL DOCUMENT PAPER, INK SCREENS, WATERMARK BACKGROUND DESIGNS, HOLOGRAM AND OTHER SECURITY FEATURES NOT LISTED AND DO EXCEED DOCUMENT SECURITY INDUSTRY GUIDELINES

April 16, 2025  
IGI Report No LG696576549  
ROUND BRILLIANT

7.97 - 8.03 X 5.03 MM

Carat Weight 2.00 CARATS

Color Grade **D**

Clarity Grade	VS 2	EXCELLENT
Clarity Grade		
Clarity Grade		

Cut Grade	EXCELLENT
Depth	62.9%

Table	56%
-------	-----

Girdle

	Pointed	Culet
in mm (x 1000)		

Curly	Polished
Polish	EXCELLENT

Symmetry	EXCELLENT
Fluorescence	NONE

Fluorescence	NONE
Inscription(s)	1891 LG696576549

Comments:

**Comments:**  
This Laboratory Grown Diamond was created by Chemical Vapor Deposition

created by Chemical Vapor Deposition (CVD) growth process.  
Type IIa

Type IIa