

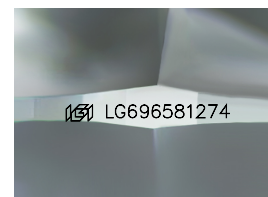
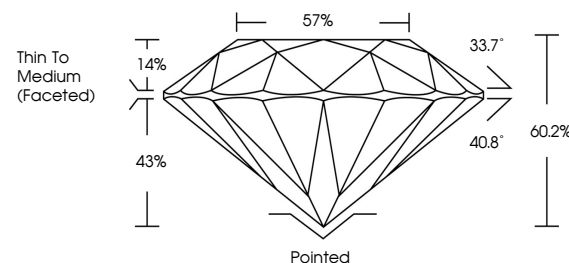


**ELECTRONIC COPY**

## LABORATORY GROWN DIAMOND REPORT

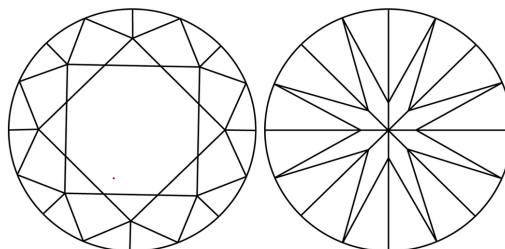
LG696581274  
Report verification at [igi.org](https://igi.org)

## PROPORTIONS



Sample Image Used

## CLARITY CHARACTERISTICS



### KEY TO SYMBOLS

Red symbols indicate internal characteristics.  
Green symbols indicate external characteristics.

## COLOR

D E F G H I J Faint Very Light Light

## CLARITY

IF      WS<sup>1-2</sup>      VS<sup>1-2</sup>      S<sup>1-2</sup>      |<sup>1-3</sup>

Internally Flawless	Very Very Slightly Included	Very Slightly Included	Slightly Included	Included
------------------------	--------------------------------	---------------------------	----------------------	----------



April 18, 2025

IGI Report Number **LG696581274**Description **LABORATORY GROWN DIAMOND**Shape and Cutting Style **ROUND BRILLIANT**

Measurements **9.47 - 9.50 X 5.71 MM**

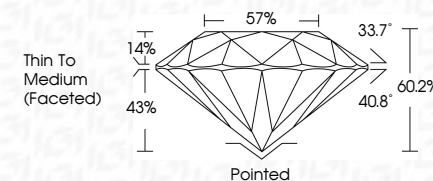
## GRADING RESULTS

Carat Weight **3.09 CARATS**

Color Grade	F
-------------	---

Clarity Grade **VVS 1**

Cut Grade **IDEAL**



### ADDITIONAL GRADING INFORMATION

Polish **EXCELLENT**Symmetry **EXCELLENT**Fluorescence **NONE**Inscription(s)  LG696581274

Comments: As Grown - No indication of post-growth treatment.

This Laboratory Grown Diamond was created by High Pressure High Temperature (HPHT) growth process.  
Type II



© IGI 2020, International Gemological Institute

FD - 10 20

**www.igi.org**



THIS DOCUMENT WAS PRODUCED WITH THE FOLLOWING SECURITY MEASURES: SPECIAL DOCUMENT PAPER, INK SCREENS, WATERMARK, BACKGROUND DESIGNS, HOLOGRAM AND OTHER SECURITY FEATURES NOT LISTED AND DO EXCEED DOCUMENT SECURITY INDUSTRY GUIDELINES

April 18, 2025  
ICI Report No LG696581274  
ROUND BRILLIANT

<b>9.97 - 9.50 X 5.71 MM</b>	<b>3.09 CARATS</b>	<b>F</b>
Carat Weight	VVS 1	IDEAL
Color Grade	60.2%	57%
Clarity Grade	Thin To Medium	(Faceted)
Cut Grade	Pointed	EXCELLENT
Depth	Polish	EXCELLENT
Table	Symmetry	NONE
Girdle	Fluorescence	

As Grown - No indication of post-growth treatment.  
This Laboratory Grown Diamond was created by High Pressure High Temperature (HPHT) growth process.