



**ELECTRONIC COPY**

## LABORATORY GROWN DIAMOND REPORT

LG696582895  
Report verification at [igi.org](https://igi.org)

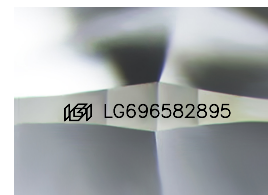
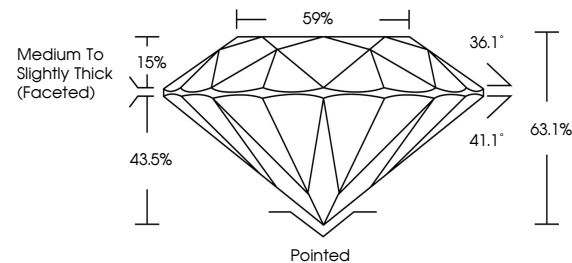
April 12, 2025	
IGI Report Number	LG696582895
Description	LABORATORY GROWN DIAMOND
Shape and Cutting Style	ROUND BRILLIANT
Measurements	7.27 - 7.30 X 4.60 MM
GRADING RESULTS	
Carat Weight	1.53 CARAT
Color Grade	D
Clarity Grade	VS 2
Cut Grade	EXCELLENT

### ADDITIONAL GRADING INFORMATION

Polish	EXCELLENT
Symmetry	EXCELLENT
Fluorescence	NONE
Inscription(s)	 LG696582895

Comments: This Laboratory Grown Diamond was created by Chemical Vapor Deposition (CVD) growth process.  
Type IIa

## PROPORTIONS



Sample Image Used

## COLOR

D E F G H I J Faint Very Light Light

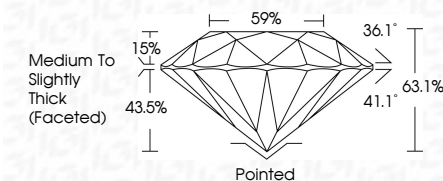
## CLARITY

IF	VS <sup>1-2</sup>	VS <sup>1-2</sup>	SI <sup>1-2</sup>	I <sup>1-3</sup>
Internally Flawless	Very Very Slightly Included	Very Slightly Included	Slightly Included	Included

## LABORATORY GROWN DIAMOND REPORT



April 12, 2025	
IGI Report Number	LG696582895
Description	LABORATORY GROWN DIAMOND
Shape and Cutting Style	ROUND BRILLIANT
Measurements	7.27 - 7.30 X 4.60 MM
GRADING RESULTS	
Carat Weight	1.53 CARAT
Color Grade	D
Clarity Grade	VS 2
Cut Grade	EXCELLENT



### ADDITIONAL GRADING INFORMATION

Polish	EXCELLENT
Symmetry	EXCELLENT
Fluorescence	NONE
Inscription(s)	 LG696582895
<p>Comments: This Laboratory Grown Diamond was created by Chemical Vapor Deposition (CVD) growth process.</p> <p>Type IIa</p>	



© IGI 2020, International Gemological Institute

FD - 10 20

**www.igi.org**



THIS DOCUMENT WAS PRODUCED WITH THE FOLLOWING SECURITY MEASURES: SPECIAL DOCUMENT PAPER, INK SCREENS, WATERMARK, BACKGROUND DESIGNS, HOLOGRAM AND OTHER SECURITY FEATURES NOT LISTED AND DO EXCEED DOCUMENT SECURITY INDUSTRY GUIDELINES

April 12, 2025  
IGI Report No LG696582895  
ROUND BRILLIANT

1.53 CARAT	Vs 2	Polished
Carat Weight	EXCELLENT	EXCELLENT
Color Grade	6A 1%	NONE
Clarity Grade	59%	4mm (Colorless)
Depth	Medium to Slightly Thick (Faceted)	Fluorescence
Table		
Grain		
Culet		
Polish		
Symmetry		
Fluorescence		

**Comments:**  
This Laboratory Grown Diamond was created by Chemical Vapor Deposition (CVD) growth process.