



ELECTRONIC COPY

LG696587344 Report verification at igi.org



April 4, 2025 IGI Report Number LG696587344 Description LABORATORY GROWN DIAMOND Shape and Cutting Style ROUND MIXED CUT Measurements 6.67 - 6.68 X 3.86 MM

GRADING RESULTS Carat Weight 1.10 CARAT Color Grade E Clarity Grade VS 2

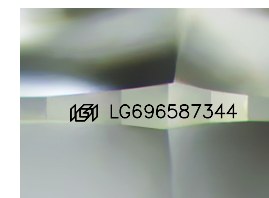
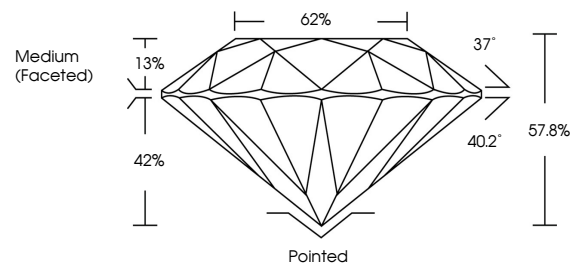
April 4, 2025 IGI Report Number LG696587344 Description LABORATORY GROWN DIAMOND Shape and Cutting Style ROUND MIXED CUT Measurements 6.67 - 6.68 X 3.86 MM

GRADING RESULTS Carat Weight 1.10 CARAT Color Grade E Clarity Grade VS 2

ADDITIONAL GRADING INFORMATION Polish EXCELLENT Symmetry EXCELLENT Fluorescence NONE Inscription(s) IGI LG696587344

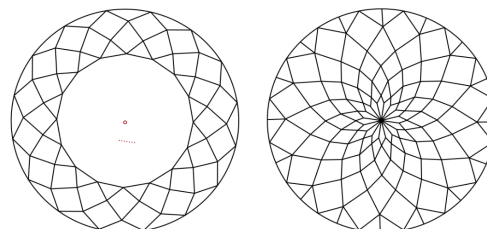
Comments: This Laboratory Grown Diamond was created by Chemical Vapor Deposition (CVD) growth process. Type IIa

PROPORTIONS



Sample Image Used

CLARITY CHARACTERISTICS



KEY TO SYMBOLS

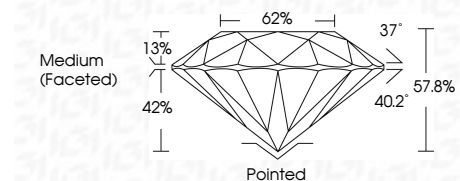
Red symbols indicate internal characteristics. Green symbols indicate external characteristics.

COLOR

D E F G H I J Faint Very Light Light

CLARITY

IF WS 1-2 VS 1-2 SI 1-2 I 1-3 Internally Flawless Very Very Slightly Included Very Slightly Included Slightly Included Included



ADDITIONAL GRADING INFORMATION

Polish EXCELLENT Symmetry EXCELLENT Fluorescence NONE Inscription(s) IGI LG696587344 Comments: This Laboratory Grown Diamond was created by Chemical Vapor Deposition (CVD) growth process. Type IIa



Summary of report details including date, report number, description, measurements, grading results, and additional information.

Comments: This Laboratory Grown Diamond was created by Chemical Vapor Deposition (CVD) growth process. Type IIa