



ELECTRONIC COPY

LABORATORY GROWN DIAMOND REPORT

LG696587401
Report verification at igi.org

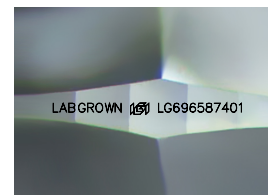
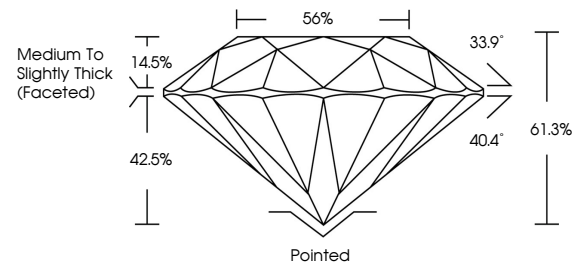
April 12, 2025	
IGI Report Number	LG696587401
Description	LABORATORY GROWN DIAMOND
Shape and Cutting Style	ROUND BRILLIANT
Measurements	6.79 - 6.83 X 4.17 MM
GRADING RESULTS	
Carat Weight	1.20 CARAT
Color Grade	D
Clarity Grade	VS 1
Cut Grade	IDEAL

ADDITIONAL GRADING INFORMATION

Polish	EXCELLENT
Symmetry	EXCELLENT
Fluorescence	NONE
Inscription(s)	LABGROWN 16 LG696587401

Comments: This Laboratory Grown Diamond was created by Chemical Vapor Deposition (CVD) growth process.
Type IIa

PROPORTIONS



Sample Image Used

COLOR

D E F G H I J Faint Very Light Light

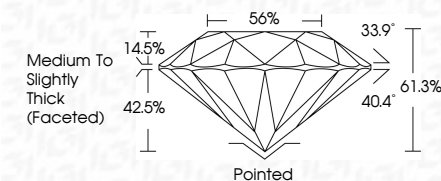
CLARITY

IF	VS ¹⁻²	VS ¹⁻²	SI ¹⁻²	I ¹⁻³
Internally Flawless	Very Very Slightly Included	Very Slightly Included	Slightly Included	Included

LABORATORY GROWN DIAMOND REPORT



April 12, 2025	
IGI Report Number	LG696587401
Description	LABORATORY GROWN DIAMOND
Shape and Cutting Style	ROUND BRILLIANT
Measurements	6.79 - 6.83 X 4.17 MM
GRADING RESULTS	
Carat Weight	1.20 CARAT
Color Grade	D
Clarity Grade	VS 1
Cut Grade	IDEAL



ADDITIONAL GRADING INFORMATION

Polish	EXCELLENT
Symmetry	EXCELLENT
Fluorescence	NONE
Inscription(s)	LABGROWN (IGI) LG696587401
Comments: This Laboratory Grown Diamond was created by Chemical Vapor Deposition (CVD) growth process. Type IIa	



IG



© IGI 2020, International Gemological Institute

FD - 10 20



THIS DOCUMENT WAS PRODUCED WITH THE FOLLOWING SECURITY MEASURES: SPECIAL DOCUMENT PAPER, INK SCREENS, WATERMARK, BACKGROUND DESIGNS, HOLOGRAM AND OTHER SECURITY FEATURES NOT LISTED AND DO EXCEED DOCUMENT SECURITY INDUSTRY GUIDELINES

www.igi.org

April 12, 2025
IGI Report No LG696587401
ROUND BRILLIANT

6.79 - 6.83 X 4.17 MM	1.20 CARAT
Color Grade	D
Clarity Grade	VS 1
Cut Grade	IDEAL
Depth	61.5%
Table	56%
Girdle	Medium to slightly Thick (faced-in)
Culet	Pointed
Polish	EXCELLENT
Symmetry	EXCELLENT
Fluorescence	NONE
Measurements	1.89x0.90x0.53

Comments:
This Laboratory Grown Diamond was created by Chemical Vapor Deposition (CVD) growth process.