



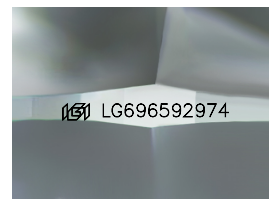
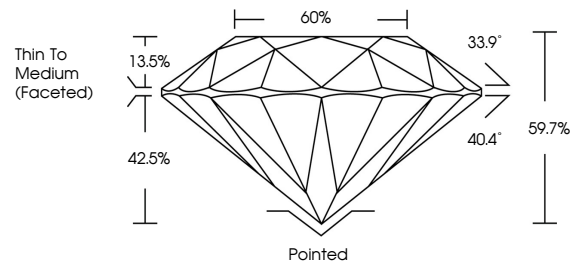
**INTERNATIONAL
GEMOLOGICAL
INSTITUTE**

ELECTRONIC COPY

LABORATORY GROWN DIAMOND REPORT

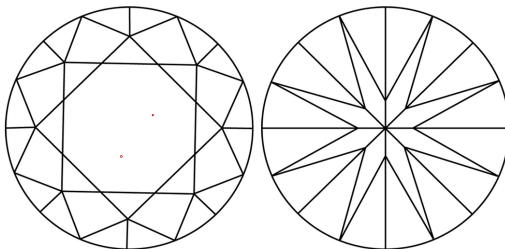
LG696592974
Report verification at igi.org

PROPORTIONS



Sample Image Used

CLARITY CHARACTERISTICS



KEY TO SYMBOLS

Red symbols indicate internal characteristics.
Green symbols indicate external characteristics.

COLOR

D E F G H I J Faint Very Light Light

CLARITY

IF WS¹⁻² VS¹⁻² SI¹⁻² |¹⁻³

Internally Flawless	Very Very Slightly Included	Very Slightly Included	Slightly Included	Included
------------------------	--------------------------------	---------------------------	----------------------	----------



April 17, 2025

IGI Report Number **LG696592974**

Description	LABORATORY GROWN DIAMOND
-------------	--------------------------

Shape and Cutting Style **ROUND BRILLIANT**

Measurements **9.31 - 9.35 X 5.57 MM**

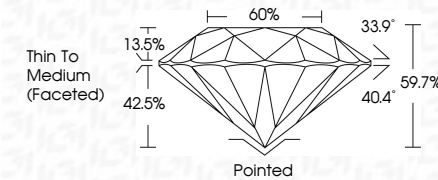
GRADING RESULTS

Carat Weight **3.01 CARATS**

Color Grade **D**

Clarity Grade VS 2

Cut Grade **IDEAL**



ADDITIONAL GRADING INFORMATION

Polish **EXCELLENT**

Symmetry **EXCELLENT**

Fluorescence **NONE**Inscription(s) LG69659297

Comments: This Laboratory Grown Diamond was created by Chemical Vapor Deposition (CVD) growth process.
Type IIa



IG



© IGI 2020, International Gemological Institute

FD - 10 20

www.igi.org

THIS DOCUMENT WAS PRODUCED WITH THE FOLLOWING SECURITY MEASURES: SPECIAL DOCUMENT PAPER, INK SCREENS, WATERMARK, RADIOMER AND DEBRIS, HIGH QUALITY AND OTHER SECURITY FEATURES ARE NOT LISTED, AND DO NOT HAVE TO BE REPRODUCED WITH COLOR COPY.

April 17, 2025
IGI Report No LG696592974
ROUND BRILLIANT

9.31 - 9.35 X 6.57 MM	3.01 CARATS	D
Carat Weight	VS 2	
Color Grade	IDEAL	
Clarity Grade	56.7%	
Cut Grade	50%	
Depth	Thin To Medium	
Table	(graded)	
Girdle		
Culet	Pointed	
Polish	EXCELLENT	
Symmetry	EXCELLENT	
Fluorescence	NONE	
Inscriptions	4641 C464500274	

Comments:
This Laboratory Grown Diamond was created by Chemical Vapor Deposition (CVD) growth process.