

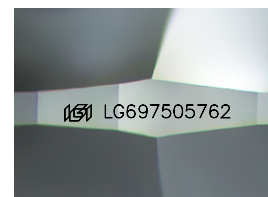
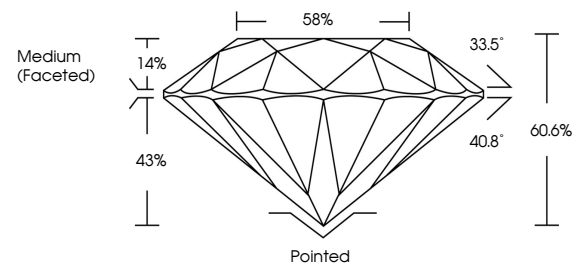


ELECTRONIC COPY

LABORATORY GROWN DIAMOND REPORT

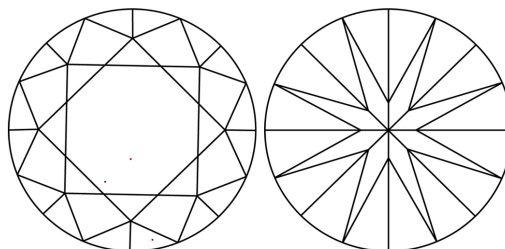
LG697505762
Report verification at igi.org

PROPORTIONS



Sample Image Used

CLARITY CHARACTERISTICS



KEY TO SYMBOLS

Red symbols indicate internal characteristics.
Green symbols indicate external characteristics.

COLOR

D E F G H I J Faint Very Light Light

CLARITY

IF WS¹⁻² VS¹⁻² SI¹⁻² |¹⁻³

Internally Flawless	Very Very Slightly Included	Very Slightly Included	Slightly Included	Included
------------------------	--------------------------------	---------------------------	----------------------	----------

LABORATORY GROWN DIAMOND REPORT



April 17, 2025

IGI Report Number **LG697505762**Description **LABORATORY GROWN DIAMOND**Shape and Cutting Style **ROUND BRILLIANT**

Measurements 8.78 - 8.83 X 5.34 MM

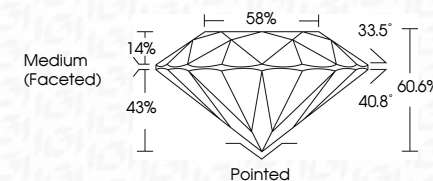
GRADING RESULTS

Carat Weight **2.54 CARATS**

Color Grade E

Clarity Grade WS 2

Cut Grade **IDEAL**



ADDITIONAL GRADING INFORMATION

Polish EXCELLENT

Symmetry **EXCELLENT**Fluorescence **NONE**Inscription(s) LG697505762

Comments: This Laboratory Grown Diamond was created by Chemical Vapor Deposition (CVD) growth process.

Type IIa



www.igi.org

© IGI 2020, International Gemological Institute

FD - 10 20



THIS DOCUMENT WAS PRODUCED WITH THE FOLLOWING SECURITY MEASURES: SPECIAL DOCUMENT PAPER, INK SCREENS, WATERMARK, BACKGROUND DESIGNS, HOLOGRAM AND OTHER SECURITY FEATURES NOT LISTED AND DO EXCEED DOCUMENT SECURITY INDUSTRY GUIDELINE

April 17, 2025
IGI Report No LG697505762
ROUND BRILLIANT

	8.78 - 8.83 X 5.34 MM		2.54 CARATS			
	Carat Weight	E				
	Color Grade	VS 2				
	Clarity Grade	IDEAL				
	Cut Grade	60.0%				
	Depth	59%				
	Table	Medium (Faceted)				
	Girdle					
	Culet					
	Polish	Pointed				
		Symmetry	EXCELLENT			
		Fluorescence	NONE			
		Inscriptions	See Cert. (GIA#7572549)			

Comments:
This Laboratory Grown Diamond was created by Chemical Vapor Deposition (CVD) growth process.