

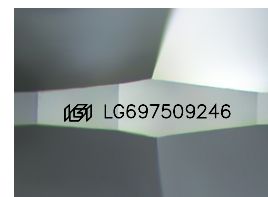
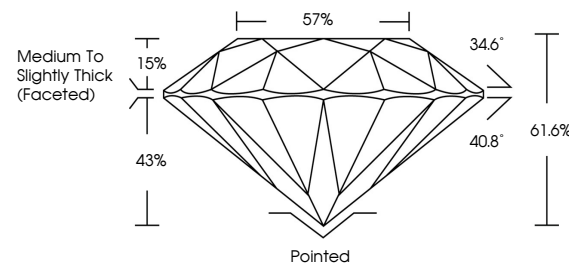


**ELECTRONIC COPY**

## LABORATORY GROWN DIAMOND REPORT

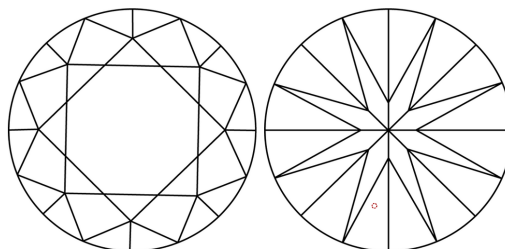
LG697509246  
Report verification at [igi.org](https://igi.org)

## PROPORTIONS



Sample Image Used

## CLARITY CHARACTERISTICS



### KEY TO SYMBOLS

Red symbols indicate internal characteristics.  
Green symbols indicate external characteristics.



**www.igi.org**

## LABORATORY GROWN DIAMOND REPORT



April 11, 2025

IGI Report Number **LG697509246**Description **LABORATORY GROWN DIAMOND**Shape and Cutting Style **ROUND BRILLIANT**

Measurements 8.16 - 8.21 X 5.04 MM

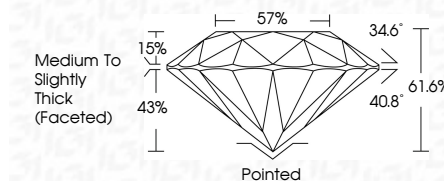
## GRADING RESULTS

Carat Weight **2.08 CARATS**

Color Grade D

Clarity Grade WS 1

Cut Grade **IDEAL**



### ADDITIONAL GRADING INFORMATION

Polish **EXCELLENT**Symmetry **EXCELLENT**Fluorescence **NONE**Inscription(s)  LG697509246

Comments: HEARTS & ARROWS

As Grown - No indication of post-growth treatment.

This Laboratory Grown Diamond was created by High Pressure High Temperature (HPHT) growth process.

Type II



© IGI 2020, International Gemological Institute

FD - 10 20



THIS DOCUMENT WAS PRODUCED WITH THE FOLLOWING SECURITY MEASURES: SPECIAL DOCUMENT PAPER, INK SCREENS, WATERMARK, BACKGROUND DESIGNS, HOLOGRAM AND OTHER SECURITY FEATURES NOT LISTED AND DO EXCEED DOCUMENT SECURITY INDUSTRY GUIDELINES

April 11, 2025  
ICI Report No LG697509246  
ROUND BRILLIANT

Carat Weight	2.08 CARATS
Color Grade	D
Clarity Grade	VVS 1
Cut Grade	IDEAL
Depth	61.6%
Table	57%
Girdle	Medium to Slightly Thick (Faceted)
Culet	Pointed
Polish	EXCELLENT
Symmetry	EXCELLENT
Fluorescence	NONE
Report#	64511247800004

**Comments:**  
As Grown - No indication of post-growth treatment.