

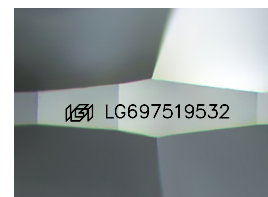
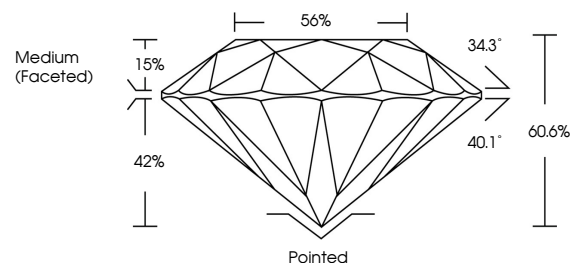


**ELECTRONIC COPY**

## LABORATORY GROWN DIAMOND REPORT

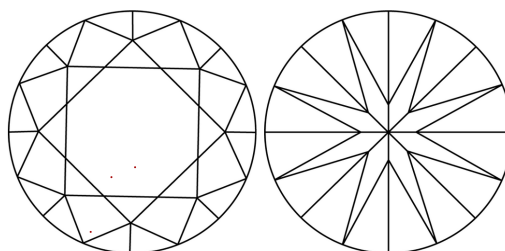
LG697519532  
Report verification at [igi.org](https://igi.org)

## PROPORTIONS



Sample Image Used

## CLARITY CHARACTERISTICS



### KEY TO SYMBOLS

Red symbols indicate internal characteristics.  
Green symbols indicate external characteristics.

## COLOR

D E F G H I J Faint Very Light Light

## CLARITY

IF WS<sup>1-2</sup> VS<sup>1-2</sup> SI<sup>1-2</sup> |<sup>1-3</sup>

Internally Flawless	Very Very Slightly Included	Very Slightly Included	Slightly Included	Included
------------------------	--------------------------------	---------------------------	----------------------	----------



April 19, 2025

IGI Report Number **LG697519532**Description **LABORATORY GROWN DIAMOND**Shape and Cutting Style **ROUND BRILLIANT**

Measurements 9.15 - 9.23 X 5.57 MM

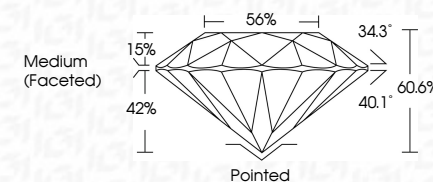
## GRADING RESULTS

Carat Weight **2.90 CARATS**

Color Grade E

Clarity Grade VVS 2

Cut Grade **IDEAL**



### ADDITIONAL GRADING INFORMATION

Polish **EXCELLENT**Symmetry **EXCELLENT**Fluorescence **NONE**Inscription(s)  LG697519532

Comments: This Laboratory Grown Diamond was created by Chemical Vapor Deposition (CVD) growth process.  
Type IIa



© IGI 2020, International Gemological Institute

FD - 10 20



THIS DOCUMENT WAS PRODUCED WITH THE FOLLOWING SECURITY MEASURES: SPECIAL DOCUMENT PAPER, INK SCREENS, WATERMARK, BACKGROUND DESIGNS, HOLOGRAM AND OTHER SECURITY FEATURES NOT LISTED AND DO EXCEED DOCUMENT SECURITY INDUSTRY GUIDELINES

**www.igi.org**

<b>April 19, 2026</b>	<b>2.00 CARATS</b>
<b>GJ Report No LG6971519332</b>	<b>E</b>
<b>ROUND BRILLIANT</b>	<b>VVS 2</b>
<b>15.15 x 12.3 x 5.57 MM</b>	<b>IDEAL</b>
<b>Color Grade</b>	<b>60.6%</b>
<b>Carat Weight</b>	<b>56%</b>
<b>Clarity Grade</b>	<b>Medium (Faced)</b>
<b>Cut Grade</b>	<b>Pointed</b>
<b>Depth</b>	<b>EXCELLENT</b>
<b>Table</b>	<b>EXCELLENT</b>
<b>Girdle</b>	<b>NONE</b>
	<b>#89 LG6971519332</b>
<b>Comments:</b>	
This Laboratory Grown Diamond was created by Chemical Vapor Deposition (CVD) growth process.	
Type IIA	