

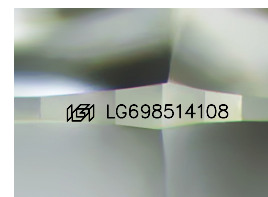
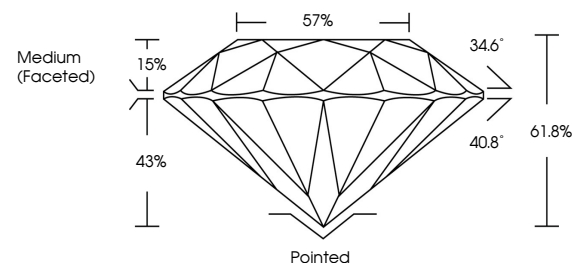


ELECTRONIC COPY

LABORATORY GROWN DIAMOND REPORT

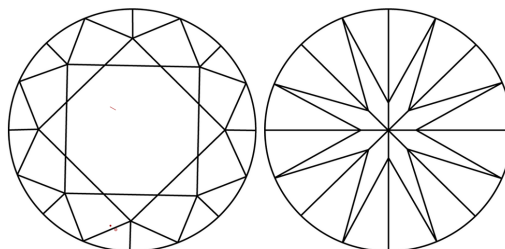
LG698514108
Report verification at igi.org

PROPORTIONS



Sample Image Used

CLARITY CHARACTERISTICS



KEY TO SYMBOLS

Red symbols indicate internal characteristics.
Green symbols indicate external characteristics.

COLOR

D E F G H I J Faint Very Light Light

CLARITY

IF WS¹⁻² VS¹⁻² SI¹⁻² |¹⁻³

Internally Flawless	Very Very Slightly Included	Very Slightly Included	Slightly Included	Included
------------------------	--------------------------------	---------------------------	----------------------	----------



© IGI 2020, International Gemological Institute

FD - 10 20

www.igi.org

LABORATORY GROWN DIAMOND REPORT



April 16, 2025

IGI Report Number **LG698514108**Description **LABORATORY GROWN DIAMOND**Shape and Cutting Style **ROUND BRILLIANT**

Measurements 6.50 - 6.54 X 4.03 MM

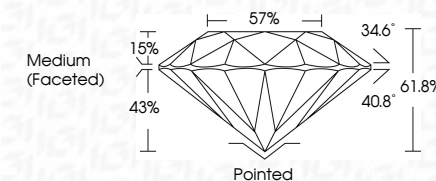
GRADING RESULTS

Carat Weight 1.06 CARAT

Color Grade

Clarity Grade VS 1

Cut Grade **IDEAL**



ADDITIONAL GRADING INFORMATION

Polish **EXCELLENT**Symmetry **EXCELLENT**Fluorescence **NONE**Inscription(s) LG698514108

Comments: As Grown - No indication of post-growth treatment.

This Laboratory Grown Diamond was created by High Pressure High Temperature (HPHT) growth process.

Type II



April 15, 2026	Report No. LG598514108	1.06 CARAT	D	Vs1	Painted	<p>Comments: 1. No indication of post-growth treatment. 2. This Laboratory Grown Diamond was created by High Pressure High Temperature (HPHT) growth process.</p>
ROUND BRILLIANT				IDEAL	EXCELLENT	
				61.6%	NONE	
				57%		
				Medium (Faceted)		
	4.50 - 4.64 X 4.03 MM	Color Weight	Color Grade	Clarity Grade	Cut Grade	
				Depth	Symmetry	
				Table	Fluorescence	
				Girdle		
					Culet	