

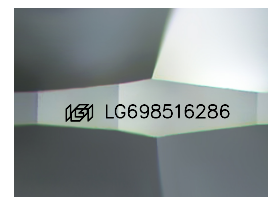
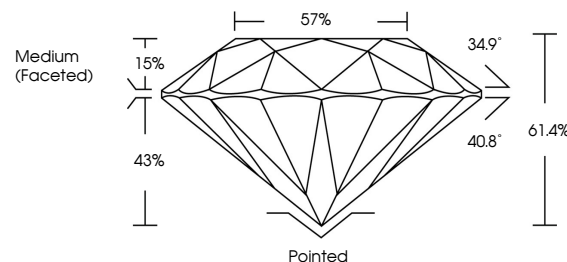


**ELECTRONIC COPY**

## LABORATORY GROWN DIAMOND REPORT

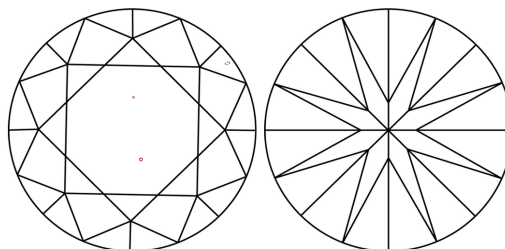
LG698516286  
Report verification at [igi.org](https://igi.org)

## PROPORTIONS



Sample Image Used

## CLARITY CHARACTERISTICS



### KEY TO SYMBOLS

Red symbols indicate internal characteristics.  
Green symbols indicate external characteristics.

## COLOR

D E F G H I J Faint Very Light Light

## CLARITY

IF WS<sup>1-2</sup> VS<sup>1-2</sup> SI<sup>1-2</sup> |<sup>1-3</sup>

Internally Flawless	Very Very Slightly Included	Very Slightly Included	Slightly Included	Included
------------------------	--------------------------------	---------------------------	----------------------	----------

## LABORATORY GROWN DIAMOND REPORT



April 15, 2025

IGI Report Number LG698516286

Description **LABORATORY GROWN DIAMOND**Shape and Cutting Style **ROUND BRILLIANT**

Measurements 8.81 - 8.86 X 5.42 MM

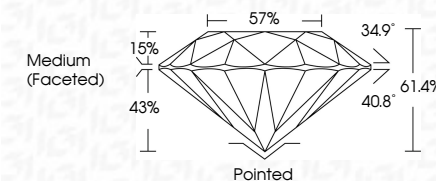
## GRADING RESULTS

Carat Weight 2.59 CARATS

Color Grade

Clarity Grade VS 2

Cut Grade **IDEAL**



### ADDITIONAL GRADING INFORMATION

Polish **EXCELLENT**Symmetry **EXCELLENT**Fluorescence **NONE**Inscription(s)  LG698516286

Comments: This Laboratory Grown Diamond was created by Chemical Vapor Deposition (CVD) growth process.

Type IIa



April 13, 2025	GI Report No. LG5985 12856	ROUND BRILLIANT	3.81 - 6.86 X 5.42 MM	2.59 CARATS	D	Vs 2	IDEAL	61.4%	57%	Medium (Faceted)	Polished	Excellent	Excellent	NONE	lgsl LG5985 12856	Comments: This Laboratory Growth Diamond was created by Chemical Vapor Deposition (CVD) growth process. Type IIa
			Carat Weight		Color Grade	Clarity Grade	Cut Grade	Depth	Table	Girdle	Culet	Polish	Symmetry	Fluorescence	Fluorescence(s)	



THIS DOCUMENT WAS PRODUCED WITH THE FOLLOWING SECURITY MEASURES: SPECIAL DOCUMENT PAPER, INK SCREENS, WATERMARK BACKGROUND DESIGNS, HOLOGRAM AND OTHER SECURITY FEATURES NOT LISTED, AND DO EXCEED DOCUMENT SECURITY INSTRUCTIONS GUIDANCE