



ELECTRONIC COPY

LG698518433
Report verification at igi.org



April 23, 2025

IGI Report Number **LG698518433**

Description **LABORATORY GROWN DIAMOND**

Shape and Cutting Style **ROUND BRILLIANT**

Measurements **8.22 - 8.26 X 5.04 MM**

GRADING RESULTS

Carat Weight **2.09 CARATS**

Color Grade **FANCY VIVID BLUE**

Clarity Grade **VS 1**

Cut Grade **IDEAL**

April 23, 2025
IGI Report Number **LG698518433**
Description **LABORATORY GROWN DIAMOND**
Shape and Cutting Style **ROUND BRILLIANT**
Measurements **8.22 - 8.26 X 5.04 MM**

GRADING RESULTS

Carat Weight **2.09 CARATS**

Color Grade **FANCY VIVID BLUE**

Clarity Grade **VS 1**

Cut Grade **IDEAL**

ADDITIONAL GRADING INFORMATION

Polish **EXCELLENT**

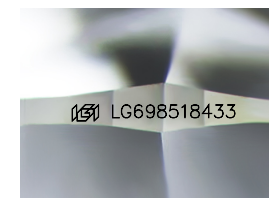
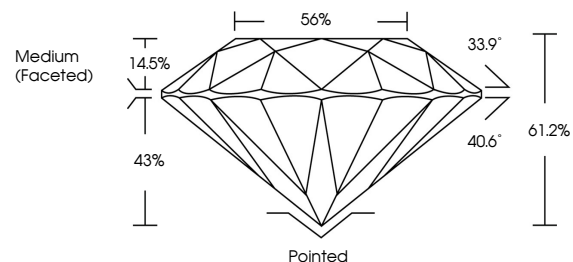
Symmetry **EXCELLENT**

Fluorescence **NONE**

Inscription(s) **LG698518433**

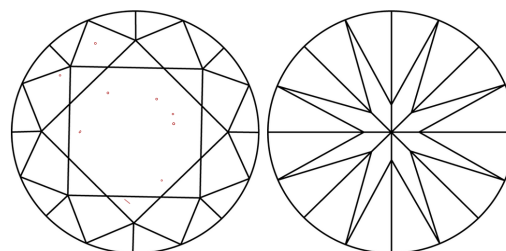
Comments: This Laboratory Grown Diamond was created by Chemical Vapor Deposition (CVD) growth process.
Indications of post-growth treatment.

PROPORTIONS



Sample Image Used

CLARITY CHARACTERISTICS



KEY TO SYMBOLS

Red symbols indicate internal characteristics.
Green symbols indicate external characteristics.

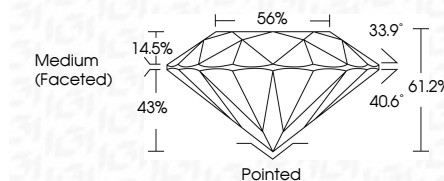
COLOR

D E F G H I J Faint Very Light Light

CLARITY

IF WS¹⁻² VS¹⁻² SI¹⁻² I¹⁻³

Internally Flawless Very Very Slightly Included Very Slightly Included Slightly Included Included



ADDITIONAL GRADING INFORMATION

Polish **EXCELLENT**

Symmetry **EXCELLENT**

Fluorescence **NONE**

Inscription(s) **LG698518433**

Comments: This Laboratory Grown Diamond was created by Chemical Vapor Deposition (CVD) growth process.
Indications of post-growth treatment.



IGI



April 23, 2025	IGI Report No LG698518433	2.09 CARATS	FANCY VIVID BLUE	VS 1	IDEAL	56%	Medium (Faceted)	Pointed	EXCELLENT	EXCELLENT	NONE	LG698518433
ROUND BRILLIANT	8.22 - 8.26 X 5.04 MM	Carat Weight	Color Grade	Clarity Grade	Cut Grade	Depth	Table	Girdle	Polish	Symmetry	Fluorescence	Inscription(s)

Comments: This Laboratory Grown Diamond was created by Chemical Vapor Deposition (CVD) growth process.
Indications of post-growth treatment.