

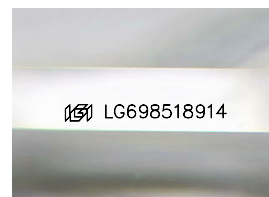
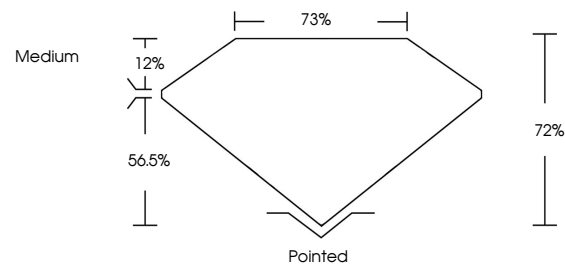


ELECTRONIC COPY

LABORATORY GROWN DIAMOND REPORT

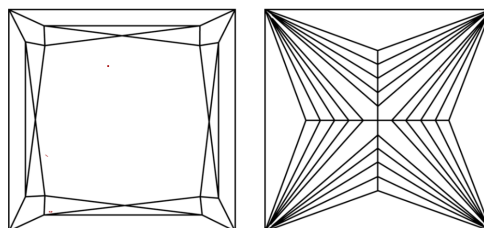
LG698518914
Report verification at igi.org

PROPORTIONS



Sample Image Used

CLARITY CHARACTERISTICS



KEY TO SYMBOLS

Red symbols indicate internal characteristics.
Green symbols indicate external characteristics.

COLOR

D E F G H I J Faint Very Light Light

CLARITY

IF	VVS ¹⁻²	VS ¹⁻²	SI ¹⁻²	I ¹⁻³
Internally Flawless	Very Very Slightly Included	Very Slightly Included	Slightly Included	Included

LABORATORY GROWN DIAMOND REPORT



April 19, 2025

IGI Report Number **LG698518914**

Description	LABORATORY GROWN DIAMOND
-------------	--------------------------

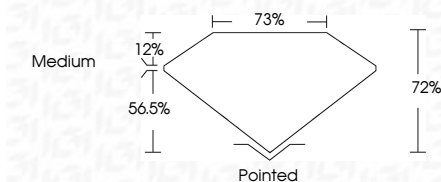
Shape and Cutting Style **PRINCESS CUT**

Measurements **7.37 X 7.18 X 5.17 MM**

GRADING RESULTS

Carat Weight **2.45 CARATS**

Color Grade	D
-------------	---

Clarity Grade **VVS 2**

ADDITIONAL GRADING INFORMATION

Polish **EXCELLENT**Symmetry **EXCELLENT**Fluorescence **NONE**Inscription(s) LG698518914

Comments: This Laboratory Grown Diamond was created by Chemical Vapor Deposition (CVD) growth process.
Type IIa



www.igi.org

© IGI 2020, International Gemological Institute

FD - 10 20



THIS DOCUMENT WAS PRODUCED WITH THE FOLLOWING SECURITY MEASURES: SPECIAL DOCUMENT PAPER, INK SCREENS, WATERMARK BACKGROUND DESIGNS, HOLOGRAM AND OTHER SECURITY FEATURES NOT LISTED AND DO EXCEED DOCUMENT SECURITY INDUSTRY GUIDELINES

April 19, 2025
 IGI Report No LG698518914
 PRINCESS CIT

2.37 X 7.18 X 5.17 MM	Carat Weight	2.45 CARATS
	Color Grade	D
	Clarity Grade	VVS 2
	Depth	72%
	Table	73%
	Girdle	Medium
	Culet	Pointed
	Polish	EXCELLENT
	Symmetry	EXCELLENT
	Fluorescence	NONE
	Measurements (s)	4.81 7.09 5.14

Comments:
This Laboratory Grown Diamond was created by Chemical Vapor Deposition (CVD) growth process.