



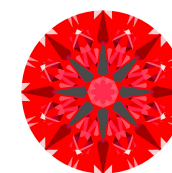
Light Performance Grade: Exceptional



April 15, 2025
IGI Report Number **LG698530498**
Description **LABORATORY GROWN DIAMOND**
Shape and Cutting Style **ROUND BRILLIANT**
Measurements **11.15 - 11.18 X 6.79 MM**

GRADING RESULTS

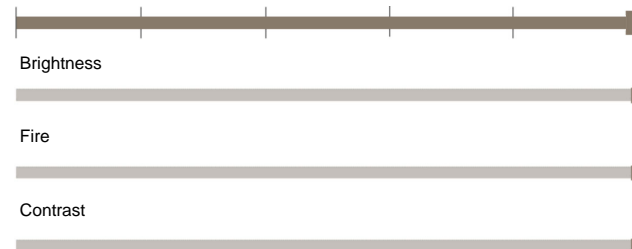
Carat Weight **5.15 CARATS**
Color Grade **E**
Clarity Grade **VVS 2**
Cut Grade **IDEAL**



Ideal-Scope representation

Low Moderate High Superior Exceptional

Light Performance



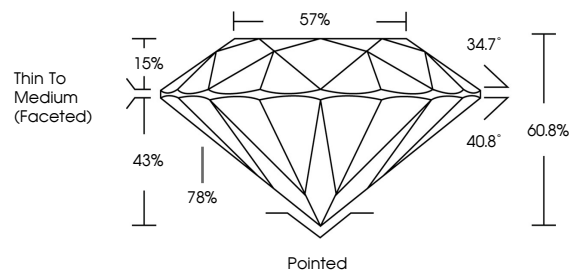
COLOR

D E F G H I J Faint Very Light Light

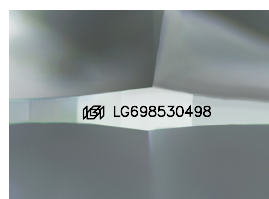
CLARITY

IF	VS ¹⁻²	VS ¹⁻²	SI ¹⁻²	I ¹⁻³
Internally Flawless	Very Very Slightly Included	Very Slightly Included	Slightly Included	Included

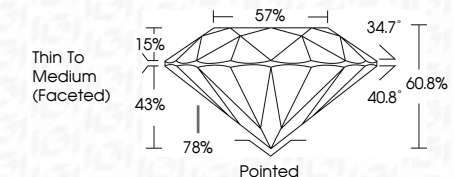
PROPORTIONS



Pointed



Sample Image Used



Pointed

ADDITIONAL GRADING INFORMATION

Polish **EXCELLENT**
Symmetry **EXCELLENT**
Fluorescence **NONE**
Inscription(s) **IGI LG698530498**

Comments: This Laboratory Grown Diamond was created by Chemical Vapor Deposition (CVD) growth process.
Type Ila



IGI



April 15, 2025	IGI Report No. LG698530498	ROUND BRILLIANT	5.15 CARATS	E
	11.15 - 11.18 X 6.79 MM		IDEAL	VVS 2
	Carat Weight		60.8%	57%
	Color Grade		Thin To Medium (Faceted)	Pointed
	Clarity Grade		EXCELLENT	EXCELLENT
	Cut Grade		EXCELLENT	EXCELLENT
	Depth		NONE	NONE
	Table		IGI LG698530498	
	Grade			
	Culet			
	Polish			
	Symmetry			
	Fluorescence			
	Inscription(s)			

Comments: This Laboratory Grown Diamond was created by Chemical Vapor Deposition (CVD) growth process.
Type Ila



ELECTRONIC COPY

LABORATORY GROWN DIAMOND REPORT

April 15, 2025
IGI Report Number **LG698530498**
Description **LABORATORY GROWN DIAMOND**
Shape and Cutting Style **ROUND BRILLIANT**
Measurements **11.15 - 11.18 x 6.79 mm**

GRADING RESULTS

Carat Weight **5.15 CARATS**
Color Grade **E**
Clarity Grade **VVS 2**
Cut Grade **IDEAL**

ADDITIONAL GRADING INFORMATION

Polish **EXCELLENT**
Symmetry **EXCELLENT**
Fluorescence **NONE**
Inscription(s) **IGI LG698530498**

Comments: This Laboratory Grown Diamond was created by Chemical Vapor Deposition (CVD) growth process.
Type Ila