



ELECTRONIC COPY

LG698540115
Report verification at igi.org



April 22, 2025
IGI Report Number: LG698540115
Description: LABORATORY GROWN DIAMOND
Shape and Cutting Style: ROUND BRILLIANT
Measurements: 9.69 - 9.76 X 5.87 MM
GRADING RESULTS
Carat Weight: 3.50 CARATS
Color Grade: G
Clarity Grade: VS 1
Cut Grade: VERY GOOD

April 22, 2025
IGI Report Number: LG698540115
Description: LABORATORY GROWN DIAMOND
Shape and Cutting Style: ROUND BRILLIANT
Measurements: 9.69 - 9.76 X 5.87 MM

GRADING RESULTS

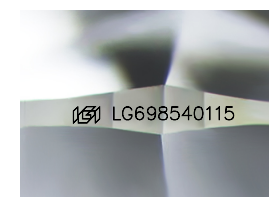
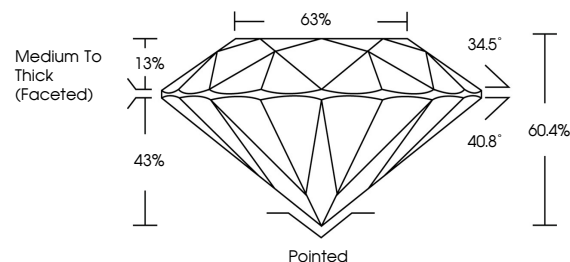
Carat Weight: 3.50 CARATS
Color Grade: G
Clarity Grade: VS 1
Cut Grade: VERY GOOD

ADDITIONAL GRADING INFORMATION

Polish: EXCELLENT
Symmetry: EXCELLENT
Fluorescence: NONE
Inscription(s): IGI LG698540115

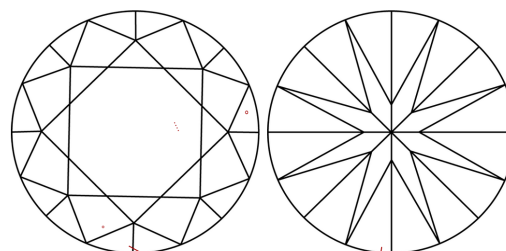
Comments: This Laboratory Grown Diamond was created by Chemical Vapor Deposition (CVD) growth process. Type IIa

PROPORTIONS



Sample Image Used

CLARITY CHARACTERISTICS



KEY TO SYMBOLS

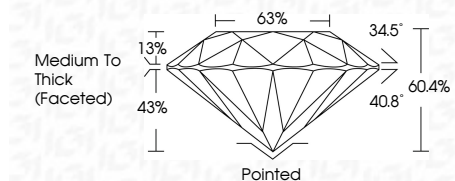
Red symbols indicate internal characteristics.
Green symbols indicate external characteristics.

COLOR

D E F G H I J Faint Very Light Light

CLARITY

IF WS 1-2 VS 1-2 SI 1-2 I 1-3
Internally Flawless Very Very Slightly Included Very Slightly Included Slightly Included Included



ADDITIONAL GRADING INFORMATION

Polish: EXCELLENT
Symmetry: EXCELLENT
Fluorescence: NONE
Inscription(s): IGI LG698540115
Comments: This Laboratory Grown Diamond was created by Chemical Vapor Deposition (CVD) growth process. Type IIa



April 22, 2025
IGI Report No. LG698540115
ROUND BRILLIANT
9.69 - 9.76 X 5.87 MM
3.50 CARATS
G
VERY GOOD
60.4%
68%
Medium To Thick (Faceted)
Pointed
EXCELLENT
EXCELLENT
NONE
IGI LG698540115
Comments: This Laboratory Grown Diamond was created by Chemical Vapor Deposition (CVD) growth process. Type IIa