



ELECTRONIC COPY

LG698546910
Report verification at igi.org



April 14, 2025
IGI Report Number **LG698546910**
Description **LABORATORY GROWN DIAMOND**
Shape and Cutting Style **CUSHION MODIFIED BRILLIANT**
Measurements **10.14 X 7.28 X 5.07 MM**
GRADING RESULTS
Carat Weight **3.00 CARATS**
Color Grade **FANCY VIVID PINK**
Clarity Grade **VS 2**

LABORATORY GROWN DIAMOND REPORT

April 14, 2025
IGI Report Number **LG698546910**
Description **LABORATORY GROWN DIAMOND**
Shape and Cutting Style **CUSHION MODIFIED BRILLIANT**
Measurements **10.14 X 7.28 X 5.07 MM**

GRADING RESULTS

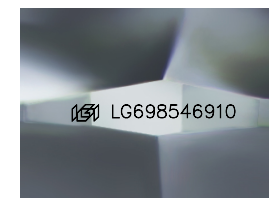
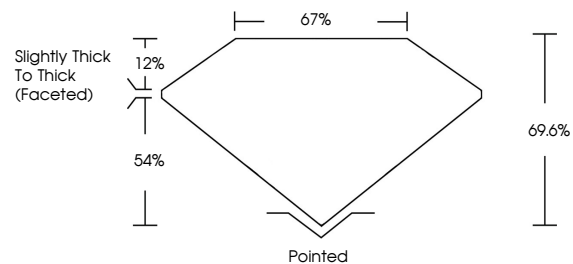
Carat Weight **3.00 CARATS**
Color Grade **FANCY VIVID PINK**
Clarity Grade **VS 2**

ADDITIONAL GRADING INFORMATION

Polish **EXCELLENT**
Symmetry **EXCELLENT**
Fluorescence **SLIGHT**
Inscription(s) **LG698546910**

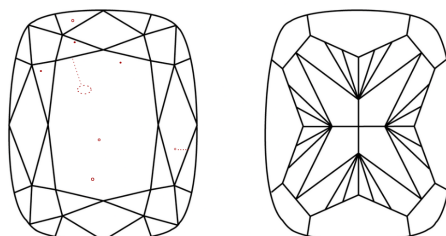
Comments: This Laboratory Grown Diamond was created by Chemical Vapor Deposition (CVD) growth process. Indications of post-growth treatment.

PROPORTIONS



Sample Image Used

CLARITY CHARACTERISTICS



KEY TO SYMBOLS

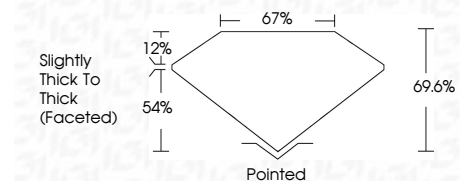
Red symbols indicate internal characteristics.
Green symbols indicate external characteristics.

COLOR

D E F G H I J Faint Very Light Light

CLARITY

IF	VS ¹⁻²	VS ¹⁻²	SI ¹⁻²	I ¹⁻³
Internally Flawless	Very Very Slightly Included	Very Slightly Included	Slightly Included	Included



ADDITIONAL GRADING INFORMATION

Polish **EXCELLENT**
Symmetry **EXCELLENT**
Fluorescence **SLIGHT**
Inscription(s) **LG698546910**
Comments: This Laboratory Grown Diamond was created by Chemical Vapor Deposition (CVD) growth process. Indications of post-growth treatment.



April 14, 2025
IGI Report No **LG698546910**
CUSHION MODIFIED BRILLIANT
10.14 X 7.28 X 5.07 MM
3.00 CARATS
FANCY VIVID PINK
VS 2
69.6%
67%
Slightly Thick To Thick (Faceted)
Pointed
EXCELLENT
EXCELLENT
SLIGHT
IGI LG698546910
Comments: This Laboratory Grown Diamond was created by Chemical Vapor Deposition (CVD) growth process. Indications of post-growth treatment.