



**ELECTRONIC COPY**

LG698557100  
Report verification at [igi.org](http://igi.org)



May 6, 2025

IGI Report Number **LG698557100**

Description **LABORATORY GROWN DIAMOND**

Shape and Cutting Style **ROUND BRILLIANT**

Measurements **6.71 - 6.73 X 4.21 MM**

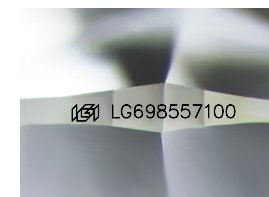
**GRADING RESULTS**

Carat Weight **1.18 CARAT**

Color Grade **FANCY VIVID GREEN**

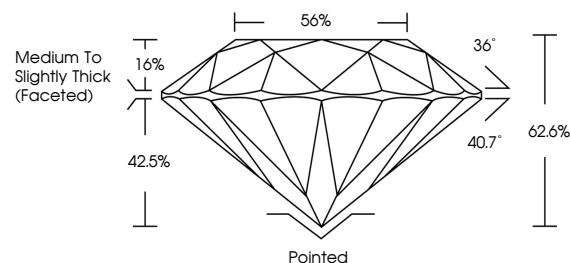
Clarity Grade **VVS 2**

Cut Grade **EXCELLENT**

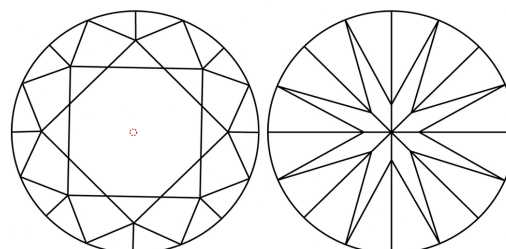


Sample Image Used

**PROPORTIONS**



**CLARITY CHARACTERISTICS**



**KEY TO SYMBOLS**

Red symbols indicate internal characteristics.  
Green symbols indicate external characteristics.

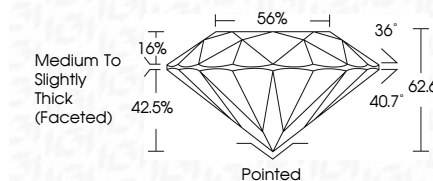
**COLOR**

D E F G H I J Faint Very Light Light

**CLARITY**

IF WS<sup>1-2</sup> VS<sup>1-2</sup> SI<sup>1-2</sup> I<sup>1-3</sup>

Internally Flawless Very Very Slightly Included Very Slightly Included Slightly Included Included



**ADDITIONAL GRADING INFORMATION**

Polish **EXCELLENT**

Symmetry **EXCELLENT**

Fluorescence **NONE**

Inscription(s) **IGI LG698557100**

Comments: This Laboratory Grown Diamond was created by High Pressure High Temperature (HPHT) growth process. Indications of post-growth treatment.



**IGI**



May 6, 2025	IGI Report No LG698557100	1.18 CARAT	Pointed
ROUND BRILLIANT	6.71 - 6.73 X 4.21 MM	FANCY VIVID GREEN	EXCELLENT
Color Grade	VVS 2	EXCELLENT	EXCELLENT
Clarity Grade	62.6%	EXCELLENT	NONE
Depth	56%	EXCELLENT	NONE
Table	Medium To Slightly Thick (Faceted)	EXCELLENT	EXCELLENT
Girdle	IGI LG698557100	EXCELLENT	EXCELLENT
Culet		EXCELLENT	EXCELLENT
Polish		EXCELLENT	EXCELLENT
Symmetry		EXCELLENT	EXCELLENT
Fluorescence		EXCELLENT	EXCELLENT
Inscriptions(s)		EXCELLENT	EXCELLENT

Comments: This Laboratory Grown Diamond was created by High Pressure High Temperature (HPHT) growth process. Indications of post-growth treatment.