



ELECTRONIC COPY

LABORATORY GROWN DIAMOND REPORT

LG698557592
Report verification at igi.org

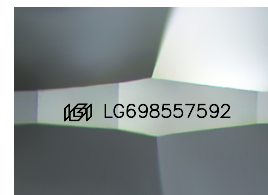
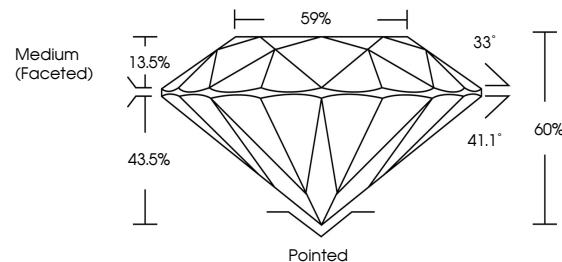
| | |
|-------------------------|--------------------------|
| April 18, 2025 | |
| IGI Report Number | LG698557592 |
| Description | LABORATORY GROWN DIAMOND |
| Shape and Cutting Style | ROUND BRILLIANT |
| Measurements | 8.18 - 8.24 X 4.92 MM |
| GRADING RESULTS | |
| Carat Weight | 2.01 CARATS |
| Color Grade | D |
| Clarity Grade | VS 2 |
| Cut Grade | IDEAL |

ADDITIONAL GRADING INFORMATION

| | |
|----------------|----------------|
| Polish | EXCELLENT |
| Symmetry | EXCELLENT |
| Fluorescence | NONE |
| Inscription(s) | 15 LG698557592 |

Comments: This Laboratory Grown Diamond was created by Chemical Vapor Deposition (CVD) growth process.
Type IIa

PROPORTIONS



Sample Image Used

COLOR

D E F G H I J Faint Very Light Light

CLARITY

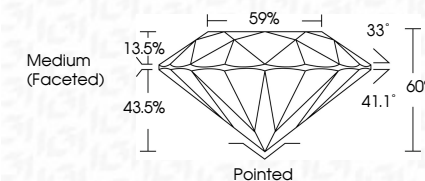
IF VS¹⁻² VS¹⁻² SI¹⁻² |¹⁻³

| | | | | |
|------------------------|--------------------------------|---------------------------|----------------------|----------|
| Internally Flawless | Very Very Slightly Included | Very Slightly Included | Slightly Included | Included |
|------------------------|--------------------------------|---------------------------|----------------------|----------|

LABORATORY GROWN DIAMOND REPORT



| | |
|-------------------------|--------------------------|
| April 18, 2025 | |
| IGI Report Number | LG698557592 |
| Description | LABORATORY GROWN DIAMOND |
| Shape and Cutting Style | ROUND BRILLIANT |
| Measurements | 8.18 - 8.24 X 4.92 MM |
| GRADING RESULTS | |
| Carat Weight | 2.01 CARATS |
| Color Grade | D |
| Clarity Grade | VS 2 |
| Cut Grade | IDEAL |



ADDITIONAL GRADING INFORMATION

| | |
|--|-----------------------------|
| Polish | EXCELLENT |
| Symmetry | EXCELLENT |
| Fluorescence | NONE |
| Inscription(s) | 1631 LG698557592 |
| Comments: This Laboratory Grown Diamond was created by Chemical Vapor Deposition (CVD) growth process. | |
| Type IIa | |



© IGI 2020, International Gemological Institute

FD - 10 20



THIS DOCUMENT WAS PRODUCED WITH THE FOLLOWING SECURITY MEASURES: SPECIAL DOCUMENT PAPER, INK SCREENS, WATERMARK, BACKGROUND DESIGNS, HOLOGRAM, AND OTHER SECURITY FEATURES NOT LISTED AND DO EXCEED DOCUMENT SECURITY INDUSTRY GUIDELINES.

www.igi.org

April 18, 2025
GI Report No LG698557592
ROUND BRILLIANT

ROUND BRILLIANT
3.18 - 8.24 X 4.92 MM

3.18 - 8.24 X 4.92 MM

| Catali Weig II | ZUI CARAIS |
|----------------|------------|
| Color Grade | D |

| Clarity Grade | VS 2 |
|---------------|------|
| VS 2 | |

| Depth | Cut Grade | IDEAL | 40% |
|-------|-----------|-------|-----|
|-------|-----------|-------|-----|

| | 59% | 60% |
|-------|--------|--------|
| Table | 0.0000 | 0.0000 |
| Depth | 0.0000 | 0.0000 |

| | | |
|--------|------------------|------|
| Girdle | Medium (Faceted) | 0.72 |
|--------|------------------|------|

7
4
1
6

| | Pointed | EXCELLENT |
|--------|---------|-----------|
| Culet | | |
| Polish | | |

EXCELLENT

EXCELLENT

Symmetry

| | |
|----------------|------------------|
| Fluorescence | NONE |
| Inscription(s) | 1811 G-698557592 |

762/0086097 (51)

Comments:
This Laboratory Grown Diamond was

created by Chemical Vapor Deposition (CVD) growth process.

Type IIa