

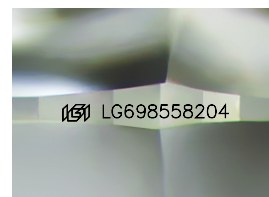
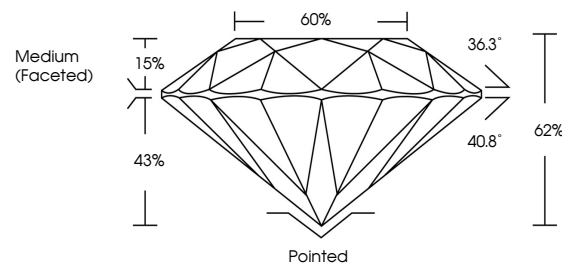


ELECTRONIC COPY

LABORATORY GROWN DIAMOND REPORT

LG698558204
Report verification at lgi.org

PROPORTIONS



Sample Image Used

CLARITY CHARACTERISTICS



KEY TO SYMBOLS

Red symbols indicate internal characteristics.
Green symbols indicate external characteristics.

COLOR

D E F G H I J Faint Very Light Light

CLARITY

IF WS¹⁻² VS¹⁻² SI¹⁻² I¹⁻³

Internally Flawless	Very Very Slightly Included	Very Slightly Included	Slightly Included	Included
------------------------	--------------------------------	---------------------------	----------------------	----------

LABORATORY GROWN DIAMOND REPORT



April 21, 2025

IGI Report Number **LG698558204**Description **LABORATORY GROWN DIAMOND**Shape and Cutting Style **ROUND BRILLIANT**

Measurements 9.19 - 9.29 X 5.74 MM

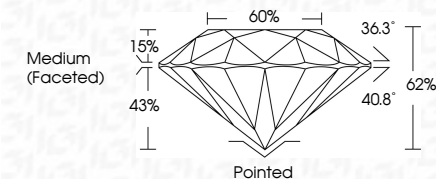
GRADING RESULTS

Carat Weight **3.08 CARATS**

Color Grade D

Clarity Grade **INTERNALLY FLAWLESS**

Cut Grade **EXCELLENT**



ADDITIONAL GRADING INFORMATION

Polish **EXCELLENT**Symmetry **EXCELLENT**

Fluorescence NONI

Inscription(s) LG698558204

Comments: As Grown - No indication of post-growth treatment.

This Laboratory Grown Diamond was created by High Pressure High Temperature (HPHT) growth process.



IG



© IGI 2020, International Gemological Institute

FD - 10 20



THIS DOCUMENT WAS PRODUCED WITH THE FOLLOWING SECURITY MEASURES: SPECIAL DOCUMENT PAPER, INK SCREENS, WATERMARK, BACKGROUND DESIGNS, HOLOGRAM AND OTHER SECURITY FEATURES NOT LISTED AND DO EXCEED DOCUMENT SECURITY INDUSTRY GUIDELINES

www.igi.org

April 21, 2025	3.08 CARATS	D	IF	Polished	Excellent	None	181 LG59655204	Comments: As Grown - No indication of post-growth treatment.
G Report No LG59655204	Color Weight	Carat Grade	Clarity Grade	Depth	Symmetry	Fluorescence		
ROUND BRILLIANT	19.19 - 9.29 x 5.71 MM		Clarity Grade	Table	Polish	Fluorescence		This Laboratory Grown Diamond was created by High Pressure High Temperature (HPHT) growth process.
			Clarity Grade	Table	Polish	Fluorescence		
			Clarity Grade	Table	Polish	Fluorescence		TYPE 1