



ELECTRONIC COPY

LABORATORY GROWN DIAMOND REPORT

May 2, 2025	
IGI Report Number	LG698560548
Description	LABORATORY GROWN DIAMOND
Shape and Cutting Style	SQUARE CUSHION MODIFIED BRILLIANT
Measurements	8.24 X 8.18 X 5.13 MM

GRADING RESULTS

Carat Weight	3.19 CARATS
Color Grade	FANCY INTENSE YELLOW
Clarity Grade	VS 1

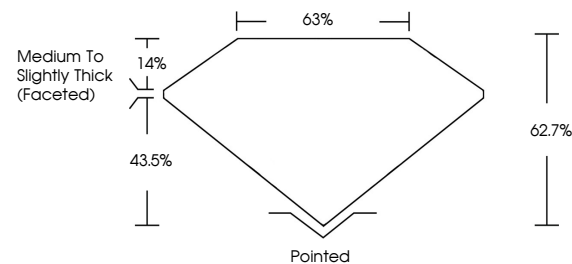
ADDITIONAL GRADING INFORMATION

Polish	EXCELLENT
Symmetry	EXCELLENT
Fluorescence	NONE
Inscription(s)	 LG698560548

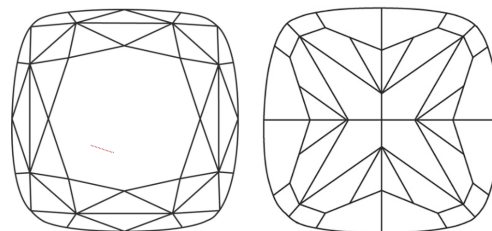
Comments: This Laboratory Grown Diamond was created by Chemical Vapor Deposition (CVD) growth process.

LG698560548
Report verification at igi.org

PROPORTIONS

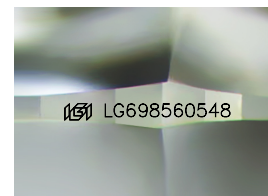


CLARITY CHARACTERISTICS



KEY TO SYMBOLS

Red symbols indicate internal characteristics.
Green symbols indicate external characteristics.



Sample Image Used

COLOR

D E F G H I J Faint Very Light Light

CLARITY

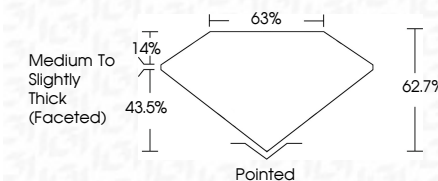
IF VS¹⁻² VS¹⁻² S¹⁻² |¹⁻³

Internally Flawless	Very Very Slightly Included	Very Slightly Included	Slightly Included	Included
------------------------	--------------------------------	---------------------------	----------------------	----------

LABORATORY GROWN DIAMOND REPORT



May 2, 2025	
IGI Report Number	LG698560548
Description	LABORATORY GROWN DIAMOND
Shape and Cutting Style	SQUARE CUSHION MODIFIED BRILLIANT
Measurements	8.24 X 8.18 X 5.13 MM
GRADING RESULTS	
Carat Weight	3.19 CARATS
Color Grade	FANCY INTENSE YELLOW
Clarity Grade	VS 1



ADDITIONAL GRADING INFORMATION

Polish	EXCELLENT
Symmetry	EXCELLENT
Fluorescence	NONE
Inscription(s)	 LG698560548
Comments: This Laboratory Grown Diamond was created by Chemical Vapor Deposition (CVD) growth process.	



© IGI 2020, International Gemological Institute

FD - 10 20



THIS DOCUMENT WAS PRODUCED WITH THE FOLLOWING SECURITY MEASURES: SPECIAL DOCUMENT PAPER, INK SCREENS, WATERMARK, BACKGROUND DESIGNS, HOLOGRAM AND OTHER SECURITY FEATURES NOT LISTED AND DO EXCEED DOCUMENT SECURITY INDUSTRY GUIDELINES

May 2, 2005	GI Report No. LG9850548	SQUARE CLURION MODIFIED DRILLANT
		1/2" X 5/16" X 5.13 MM
Carat Weight	3.19 CARATS	
Color Grade	FANCY INTENSE YELLOW	
Clarity Grade	VS 1	
Depth	62.7%	
Table	69%	
Girdle	Medium to slightly Thick (faced)	
Culet	Pointed	
Polish	EXCELLENT	
Symmetry	EXCELLENT	
Fluorescence	NONE	
Inscriptions(s)	#8 LG9850548	

Comments: Laboratory Group Diamond was created by Chemical Vapor Deposition (CVD) growth process.

Comments:
This Laboratory Grown Diamond was created by Chemical Vapor Deposition

www.igi.org