



**ELECTRONIC COPY**

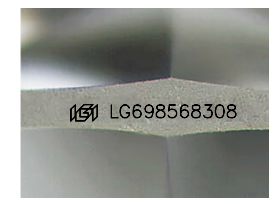
LG698568308  
Report verification at igi.org



April 25, 2025  
IGI Report Number **LG698568308**  
Description **LABORATORY GROWN DIAMOND**  
Shape and Cutting Style **OCTAGONAL STEP CUT**  
Measurements **6.17 X 6.20 X 3.74 MM**

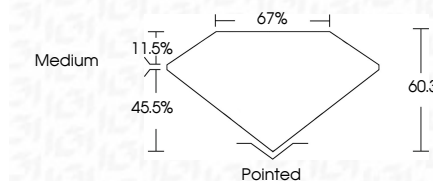
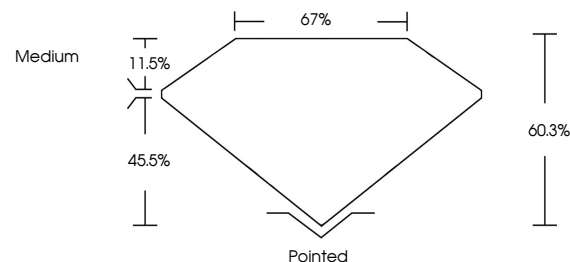
**GRADING RESULTS**

Carat Weight **1.04 CARAT**  
Color Grade **E**  
Clarity Grade **VVS 1**

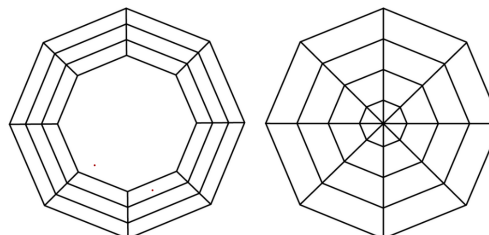


Sample Image Used

**PROPORTIONS**



**CLARITY CHARACTERISTICS**



**KEY TO SYMBOLS**

Red symbols indicate internal characteristics.  
Green symbols indicate external characteristics.

**COLOR**

D E F G H I J Faint Very Light Light

**CLARITY**

IF	VS <sup>1-2</sup>	VS <sup>1-2</sup>	SI <sup>1-2</sup>	I <sup>1-3</sup>
Internally Flawless	Very Very Slightly Included	Very Slightly Included	Slightly Included	Included

**ADDITIONAL GRADING INFORMATION**

Polish **EXCELLENT**  
Symmetry **EXCELLENT**  
Fluorescence **NONE**  
Inscription(s) **IGI LG698568308**  
Comments: This Laboratory Grown Diamond was created by Chemical Vapor Deposition (CVD) growth process.  
Type IIa



April 25, 2025  
IGI Report No. LG698568308  
OCTAGONAL STEP CUT  
6.17 X 6.20 X 3.74 MM  
1.04 CARAT  
E  
VVS 1  
60.3%  
67%  
Medium  
Pointed  
EXCELLENT  
EXCELLENT  
NONE  
IGI LG698568308  
Comments: This Laboratory Grown Diamond was created by Chemical Vapor Deposition (CVD) growth process.  
Type IIa