

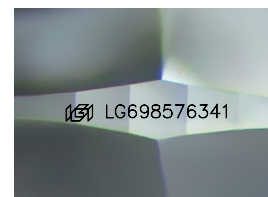
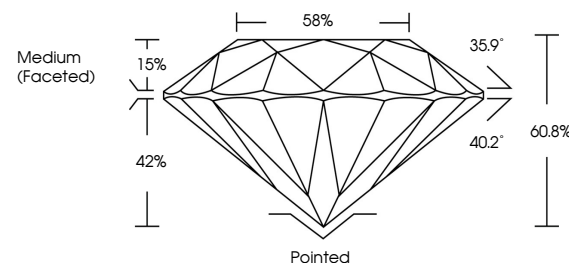


ELECTRONIC COPY

LABORATORY GROWN DIAMOND REPORT

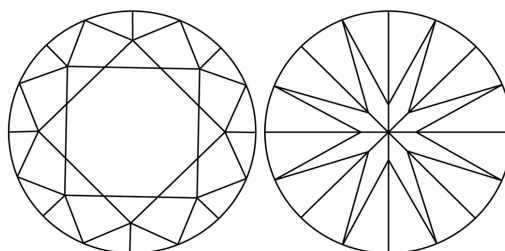
LG698576341
Report verification at igi.org

PROPORTIONS



Sample Image Used

CLARITY CHARACTERISTICS



KEY TO SYMBOLS

Red symbols indicate internal characteristics.
Green symbols indicate external characteristics.

COLOR

D E F G H I J Faint Very Light Light

CLARITY

IF WS¹⁻² VS¹⁻² S¹⁻² |¹⁻³

Internally Flawless	Very Very Slightly Included	Very Slightly Included	Slightly Included	Included
------------------------	--------------------------------	---------------------------	----------------------	----------



© IGI 2020, International Gemological Institute

FD - 10 20

www.igi.org

LABORATORY GROWN DIAMOND REPORT



April 17, 2025

IGI Report Number **LG698576341**Description **LABORATORY GROWN DIAMOND**Shape and Cutting Style **ROUND BRILLIANT**

Measurements 9.26 - 9.31 X 5.64 MM

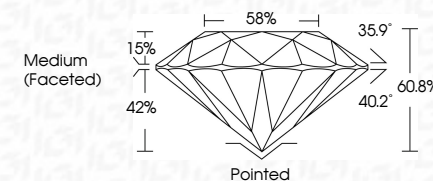
GRADING RESULTS

Carat Weight **3.02 CARATS**

Color Grade E

Clarity Grade **INTERNALLY FLAWLESS**

Cut Grade **IDEAL**



ADDITIONAL GRADING INFORMATION

Polish **EXCELLENT**Symmetry **EXCELLENT**Fluorescence **NONE**Inscription(s) LG698576341

Comments: As Grown - No indication of post-growth treatment.

This Laboratory Grown Diamond was created by High Pressure High Temperature (HPHT) growth process.

Type II



April 17, 2026	3.02 CARATS	Pointed
G Report No LG69576341	E	EXCELLENT
ROUND BRILLIANT	IF	EXCELLENT
	IDGAL	NONE
	60.8%	169 LG69576341
	58%	
	Medium (Faceted)	
		Culet
		Polish
		Symmetry
		Fluorescence
		Inscriptions (s)
Comments:		
Notes: Growth - No indication of post-growth		
This Laboratory Grown Diamond was		
created by High Pressure High		
temperature (HPHT) growth process.		
Type I		